



Sikalastic®

# SIKA SOLUTIONS FOR PARKING DECKS AND BALCONIES

ECONOMIC AND DURABLE WATERPROOFING PROTECTION

BUILDING TRUST  
CONSTRUIRE LA CONFIANCE



# ONE-COMPONENT: Balcony and Parking Coating Systems

Fully bonded and seamless elastomeric waterproofing polyurethane system. Easily applied, repaired and renewed, for exterior and interior top coats on structural slabs to provide improved wear and UV resistance.

FEATURES	BENEFITS
Single component system	Ease of application with unlimited pot life restrictions
Seamless and fully bonded	Eliminates lateral water migration undermining durability
Elastomeric across temperature range	Excellent crack bridging properties even at low temperatures
Abrasion and chemical resistant	Resist to light vehicle traffic, vehicle fluids spills and as well to deicing salts exposure
Different variations of surface textures may be achieved*	Increased mechanical properties and slip resistance
Liquid applied membrane, easily maintained	Low cost to install and maintain
Acceptable for exterior applications	Enhanced wear and UV resistance, with broader choice of colours

\* Surface texture will be determined by quantity and gradation of sand broadcasted into wear course



## Wear Course Colours\* Custom colours available on request



Grey



Charcoal



Tan



Limestone

\*Disclaimer: All colours shown are as accurate as printing methods and display screens permit. Results may differ due to variances in application technique and gloss levels may vary depending upon product used. Final colour selections should be made based upon actual samples. Please consult a Sika Canada for detailed advice.

## SYSTEM COMPONENTS

Sikalastic®-700 Series	Product Name	Product Description
<b>Membrane</b>	Sikalastic®-710 NP Membrane	1-component elastomeric polyurethane waterproofing membrane
<b>Wear Course Topcoat</b>	Sikalastic®-735 AL	Aliphatic 1-component, UV resistant polyurethane wear course

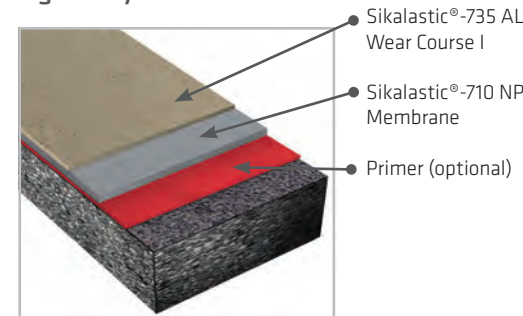
## TYPICAL BALCONY, PEDESTRIAN AND PARKING DECK SYSTEMS

Zone	Sika® MT Primer or Sikalastic®-120 FS Primer (Optional)	Sikalastic®-710 NP Membrane	Wear Course I Sikalastic®-735 AL	Wear Course II Sikalastic®-735 AL
<b>Light</b> (balconies and pedestrian areas)	6 - 10 mils (w.f.t./d.f.t)	32 mils (w.f.t.) 23 mils (d.f.t.)	20 mils (w.f.t.) 15 mils (d.f.t.)	-
<b>Light</b> (parking stalls)	6 - 10 mils (w.f.t./d.f.t)	32 mils (w.f.t.) 23 mils (d.f.t.)	25 mils (w.f.t.) 19 mils (d.f.t.)	-
<b>Medium</b> (drive lanes)	6 - 10 mils (w.f.t./d.f.t)	32 mils (w.f.t.) 23 mils (d.f.t.)	20 mils (w.f.t.) 15 mils (d.f.t.)	20 mils (w.f.t.) 15 mils (d.f.t.)
<b>Heavy</b> (traffic areas such as turn lanes, entrances and ramps)	6 - 10 mils (w.f.t./d.f.t)	32 mils (w.f.t.) 23 mils (d.f.t.)	25 mils (w.f.t.) 19 mils (d.f.t.)	20 mils (w.f.t.) 15 mils (d.f.t.)

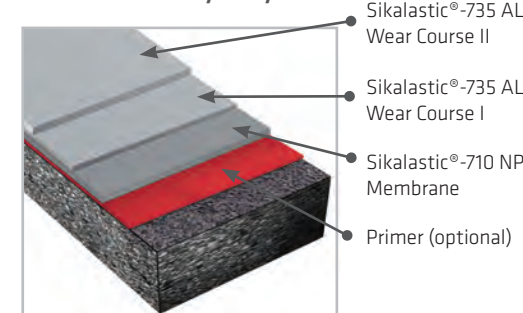
- Zone descriptions and thicknesses above are recommended for guideline purposes. If thickness variations are required outside of these parameters, contact Sika Canada.
- Surface profile and/or porosity will influence consumption required to achieve the minimum film thicknesses recommended.
- For surface textures (broadcast aggregates) and all other technical, application information and product limitations, refer to the Product Data Sheet of the related product.
- For slabs on grade, use **Sika Ferroguard®-908**, **Sikagard® SN-40 Lo-VOC** or **Sikagard® SN-100** protective penetrating silane sealers.

## SYSTEM BUILD-UP

### Light Duty Zones



### Medium to Heavy Duty Zones





# TWO-COMPONENT: Sikalastic®-3900 Traffic System

This system utilizes polyurethane and epoxy technologies to protect steel-reinforced, concrete traffic and pedestrian decks from the damaging effects of chlorides and water ingress. Manufactured in Canada, specifically for Canadian conditions.

FEATURES	BENEFITS
Conforms to standard CSA S413-14	Conforms to most recent Canadian standards for parking garages
Low temperature crack bridging	Continued protection across ~1.5 mm (1/16 in) wide crack at -26 °C (15 °F)
Medium to low viscosity systems	Easy to install / increased productivity
Resistance to chemicals and solutions	Barrier to deicing salts and automotive fluids
Different variations of surface textures may be achieved*	Increased mechanical properties and slip resistance
Seamless waterproofing and protection	Prolonged service life of structures
Two-component, hybrid wearing courses	Excellent abrasion and wear resistance

\* Surface texture will be determined by quantity and gradation of sand broadcasted into wear course

## Wear Course Colours\* Custom colours available on request



RAL 7015  
Slate Grey



RAL 9017  
Traffic Black

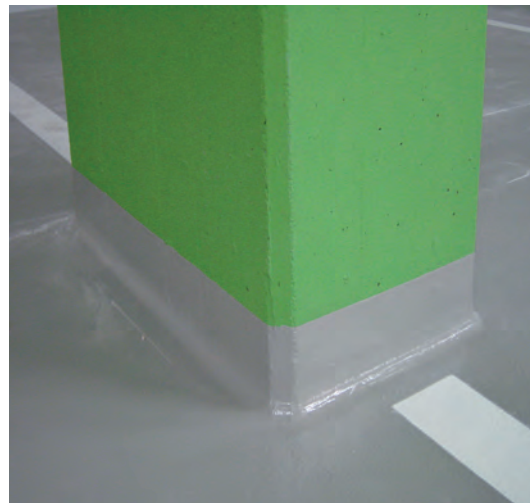


RAL 7046  
Telegrey 2



RAL 7012  
Basalt Grey

\*Disclaimer: All colours shown are as accurate as printing methods and display screens permit. Results may differ due to variances in application techniques and gloss levels may vary depending upon product used. Final colour selections should be made based upon actual samples. Please consult Sika Canada for detailed advices.



## SYSTEM COMPONENTS

Sikalastic®-3900 Traffic System	Product Name	Product Description
<b>Primer Options</b>	Sika® MT Primer	Moisture-tolerant and adhesion promoting primer for dry or damp substrates
	Sikalastic®-120 FS Primer	Adhesion -promoting fast-setting primer
<b>Membrane</b>	Sikalastic®-390 Membrane	2-component elastomeric polyurethane waterproofing membrane
<b>Wear Course Topcoat Options</b>	Sikalastic®-391 N	Standard 2-component polyurethane-based wear course
	Sikalastic®-394	2-component aliphatic, UV resistant polyurethane wear course

## TYPICAL PARKING DECK SYSTEMS

Unless indicated otherwise, mils thicknesses equate to both w.f.t. and d.f.t., being 100 % solids materials.

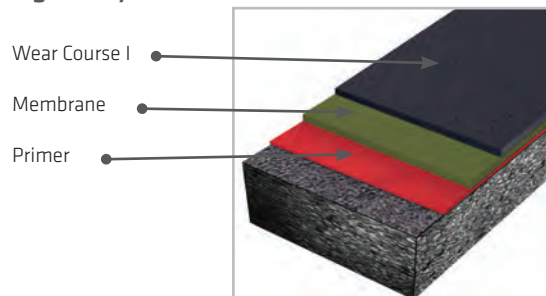
Zone	Sika® MT Primer or Sikalastic®-120 FS Primer	Sikalastic®-390 Membrane	Wear Course I Sikalastic®-391 N / -394*	Wear Course II Sikalastic®-391 N / -394*
<b>Light</b> (parking stalls and pedestrian)	6 - 10 mils	25 - 30 mils	18 -20 mils	-
<b>Medium</b> (drive lanes)	6 - 10 mils	25 - 30 mils	18 - 20 mils	15 - 20 mils
<b>Heavy</b> (turn lanes, ramps, entry/exit, ticket booth)	6 - 10 mils	25 - 30 mils	25 - 30 mils	15 - 25 mils

\*Use Sikalastic®-394 as final wear course for UV resistance to sunlight exposure.

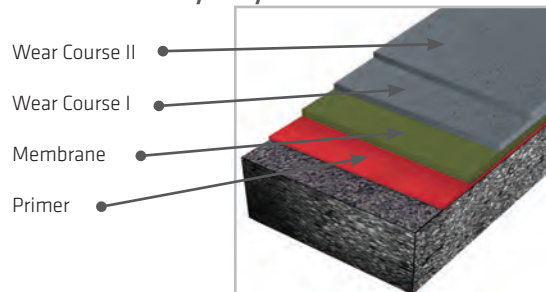
- Additional wear course options, such as Sikalastic®-220 FS and Sikalastic®-8200, are also available. Contact your Sika Canada technical representative for features, advantages and recommendations.
- Zone descriptions and thicknesses above are recommended for guideline purposes. If thickness variations are required outside of these parameters, contact Sika Canada.
- Surface profile and/or porosity will influence consumption required to achieve the minimum film thicknesses recommended.
- For surface textures (broadcast aggregates) and all other technical, application information and product limitations, refer to the Product Data Sheet of the related product.
- For slabs on grade, use Sika Ferrogard®-908, Sikagard® SN-40 Lo-VOC or Sikagard® SN-100 protective penetrating silane sealers.

## SYSTEM BUILD-UP

### Light Duty Zones



### Medium to Heavy Duty Zones



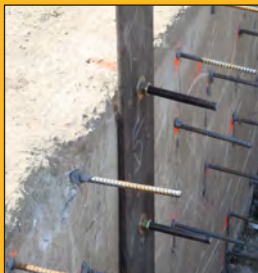
# SIKA CAR PARK SOLUTIONS

When it comes to construction, maintenance and refurbishment of parking structures, Sika can help you at virtually every stage of the process with a fully integrated and warranted range of systems. These include: concrete admixtures, corrosion inhibitors, galvanic anodes and other forms of corrosion management; full-depth, patch or shallow repair mortars; anchoring adhesives and injection resins; joint sealants; penetrating sealers and protective/decorative coatings; right through to line marking materials for the deck membranes themselves. **Sika has your car park covered!**



## WATERPROOFING

SikaProof®  
Sika® Greenstreak®  
Sikalastic®  
SikaSwell®  
Sikagard®



## ANCHORING

Sika AnchorFix®  
Sikadur®  
SikaGrout®



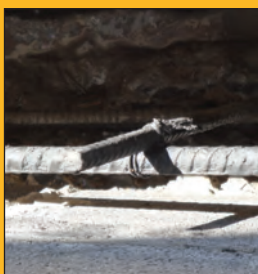
## STRUCTURAL STRENGTHENING

Sika® CarboDur®  
Sika® CarboShear  
SikaWrap®



## CORROSION MITIGATION

Sika® Galvashield®  
Sika Ferroguard®  
Sika® Ebonex®



## STEEL PRIMERS AND BONDING AGENTS

SikaTop® Armatec  
Sikadur®  
Sikagard®



## PROTECTIVE SEALERS

Sikagard®  
Sikafloor®  
Sika® Florseal  
Sikalastic® Duocel



## CONCRETE AND FULL DEPTH REPAIRS

Sikacrete®  
Sika® Viscocrete®



## SURFACE REPAIR AND LEVELLING MORTARS

SikaTop®  
Sika MonoTop®  
SikaQuick®  
Sikafloor®  
Sika® Pronto®  
Sikafloor® Level



## CRACK INJECTION RESINS

Sikadur®  
SikaFix®



## MOISTURE MITIGATION SYSTEMS

Sikagard® EpoCem®CA  
Sikafloor® EpoCem®CA  
Sika® Primer



## EXPANSION AND CONTROL JOINTS

Sikaflex®  
Sikasil®  
Sika® Duoflex®  
Sikadur® Combiflex®



## PROTECTIVE AND DECORATIVE COATINGS

Sikagard®  
Sikagard® Duroplast

The Information, and in particular, the recommendations relating to the application and end-use of Sika products, are given in good faith based on Sika's current knowledge and experience of the products when properly stored, handled and applied under normal conditions, within their shelflife. In practice, the differences in materials, substrates and actual site conditions are such that no warranty in respect of merchantability or of fitness for a particular purpose, nor any liability arising out of any legal relationship whatsoever, can be inferred either from this information, or from any recommendations, or from any other advice offered. The information contained herein does not relieve the user of the products from testing them for the intended application and purpose. The proprietary rights of third parties must be observed. All orders are accepted subject to our current terms of sale and delivery. Users must always refer to the most recent issue of the local Product Data Sheet for the product concerned, copies of which will be supplied on request or may be downloaded from our website at: [www.sika.ca](http://www.sika.ca)

### SIKA CANADA INC.

**Head Office**  
601, avenue Delmar  
Pointe-Claire, Quebec  
H9R 4A9

### Other locations

Toronto  
Edmonton  
Vancouver

**1-800-933-SIKA**  
**www.sika.ca**

Certified ISO 9001 (CERT-0102780)  
Certified ISO 14001 (CERT-0102791)

**BUILDING TRUST**  
**CONSTRUIRE LA CONFIANCE**

