



ROOFING

Sikalastic® RoofPro SYSTEMS

Liquid-Applied Membrane Technology

BUILDING TRUST
CONSTRUIRE LA CONFIANCE



Sikalastic® RoofPro SYSTEMS AND TECHNOLOGY

Discover our new MTC Technology

Our new MTC Technology for Moisture-Triggered Chemistry incorporates a unique technology that allows the material to use atmospheric moisture to trigger the curing process. This means the waterproofing membranes are capable of curing under a wide range of conditions including extreme temperature ranges and humidity variations.



THE SYSTEM CURES IN 10 MINUTES AND BECOMES RAIN-RESISTANT:

Temperature	Relative Humidity	Rain-Resistant*	Touch Dry	Full Cure
2 °C	50 %	10 min	8 - 12 hrs	16 - 24 hrs
10 °C	50 %	10 min	4 hrs	8 - 12 hrs
20 °C	50 %	10 min	3 hrs	6 - 8 hrs

*Heavy rain or rain showers can cause physical damage to the applied membrane while in its liquid phase.

Note: Times are approximate and will be affected by changing ambient conditions, particularly temperature and relative humidity.

Moisture-triggered chemistry provides Sikalastic® RoofPro systems with increased tolerance to substrate and incidental moisture at time of application.

Sikalastic® RoofPro systems are waterproof shortly after application, providing protection against sudden rainstorms and adverse weather conditions.

This MTC Technology offers installation advantages that other liquid-applied systems cannot match:

- No CO₂ is released during the curing system, means no outgassing and bubbling, unlike typical polyurethane systems.
- Applicator-friendly in extreme temperatures, particularly hot weather, unlike typical polymethyl methacrylate and other multi-component systems.
- Does not require the installation of a separate UV-resistant protection layer nor separate sheet rubber flashing material, unlike typical hot-applied rubberized systems.



THE BENEFITS OF OUR Sikalastic® RoofPro SYSTEMS

- Seamless application: eliminates lap seams
- Single component technology: eliminates labour costs, potential error and risk of incomplete curing
- A fully integrated system: self-adhering and self-terminating flashings
- For any shape and any profile: no more pitch pans, metal sleeves, etc.
- Fire-rated, wind-rated and alkaline-resistant
- Direct bonding to substrate with exceptional adhesion to most, such as: concrete, brick, terra-cotta, limestone, wood, glass, copper, steel, aluminium, existing bituminous roofing and even many single-ply membranes
- 25 years of proven performance worldwide



RANGE OF APPLICATIONS

Sikalastic® RoofPro Systems are excellent solutions for a wide range of roofing and waterproofing applications:



ROOFING

- **Built-Up Insulated Roofing** – Reflective, energy-efficient application over cover board and polyisocyanurate foam insulation.
- **Direct-to-Substrate Roofing** – Heavy-duty application to structural concrete and wood decks.
- **Protected Membrane Roofing** – Seamless, self-flashing installation under extruded polystyrene insulation with stone or concrete paver ballast.
- **Recover Roofing** – Direct application to existing asphaltic, modified bitumen, and single-ply membranes, potentially eliminating the need for costly replacement of existing roofing, as well as adding minimal additional weight – less than 1 psf.



RESTORATION

- **Decorative Elements** – Preserve and protect water tables, ledges, eyebrows, cornices, built-in gutters, dormers, domes, etc.
- **Metal Roofing** – Retain profile of standing seam, batten, and flat seam roofing; seal overlap joints, penetrations, valleys, and other problematic areas.



REPAIR

- **Existing Flashings** – Replace deteriorated wall flashings, base flashings, penetration flashings, pitch pans, expansion joints, etc.
- **Unique Conditions** – Through-wall flashings, lintel protection, stairs and walkways, planters and tree pits.

Sikalastic® RoofPro PRODUCTS

Sikalastic® RoofPro System combines the use of a primer, a base coat, a reinforcement and a top coat resin.

1. Primers = One primer for each need.	Remarks	Sika® Concrete Primer	Sikalastic® DTE Primer	Sika® Bonding Primer	Sikalastic® EP Primer/Sealer
Concrete	1	●	●	●	
Lightweight structural concrete	1		●		
Gypsum based roof boards		●		●	
Brick, stone	3			●	
Bituminous substrate*	2,3				●
Roof tiles	3,4			●	
Polyester (Glass fiber reinforced)	3			●	
PU foam				●	●
Metals**	3				●
Paints and coating	3			●	
Aluminized solar reflective coatings	3				●
Wood - Timber and plywood	3			●	●

(1) New cementitious substrates must be Portland-based and must cure within a minimum of 14 days.

(2) The presence of volatiles may cause discolouration of Sikalastic® if not properly primed.

(3) Surface evaluation and field adhesion testing.

(4) Glazed tile, please consult Sika Canada.

(5) Pressure treated lumber, please consult Sika Canada.

*Asphalt, bituminous felts, bituminous coatings, granulated or smooth SBS & APP cap sheets.

**Aluminium, galvanized, cast iron, copper, lead, brass, stainless steel, steel, zinc. For pre-coated metal, please consult Sika Canada.

2. Base coat = Sikalastic®-601 BC (BC: Base Coat) or Sikalastic®-621 TC (TC: Top Coat)

Sikalastic®-601 BC is the economic base coat resin, available in red, while Sikalastic®-621 TC, also usable as a top coat, comes in several colours.

3. Reinforcement = Sika® Reemat Fiberglass Mat

High tensile-strength reinforcement, eliminates visible reinforcement overlaps, conform to many flashing conditions without special cutting and fitting

4. Top coat = Sikalastic®-621 TC

Enhanced base and top coat resin, available in Steel Gray, Pearl Grey, White, Mushroom, Copper Green.

AVAILABLE COLOURS



Mushroom

White



Pearl Gray



Steel Gray



Copper Green

The colours shown are as accurate as printing processes permit and the colour rendition is the closest possible to the finished floor and wall products. However, results may differ due to variances in application and finishing methods, lighting and the products used. Final colour selection should be made based upon actual material samples and where necessary, trial areas. Please consult Sika Canada for detailed advice and guidance.

APPLICATION OVERVIEW



Step 1 - SUBSTRATE PREPARATION



Step 2 - INSULATION/COVER BOARD
(As specified)



Step 3 - PRIMER APPLICATION



Step 4 - DETAILING/FLASHING



Step 5 - MEMBRANE APPLICATION

FULL TECHNICAL SUPPORT AND WARRANTY

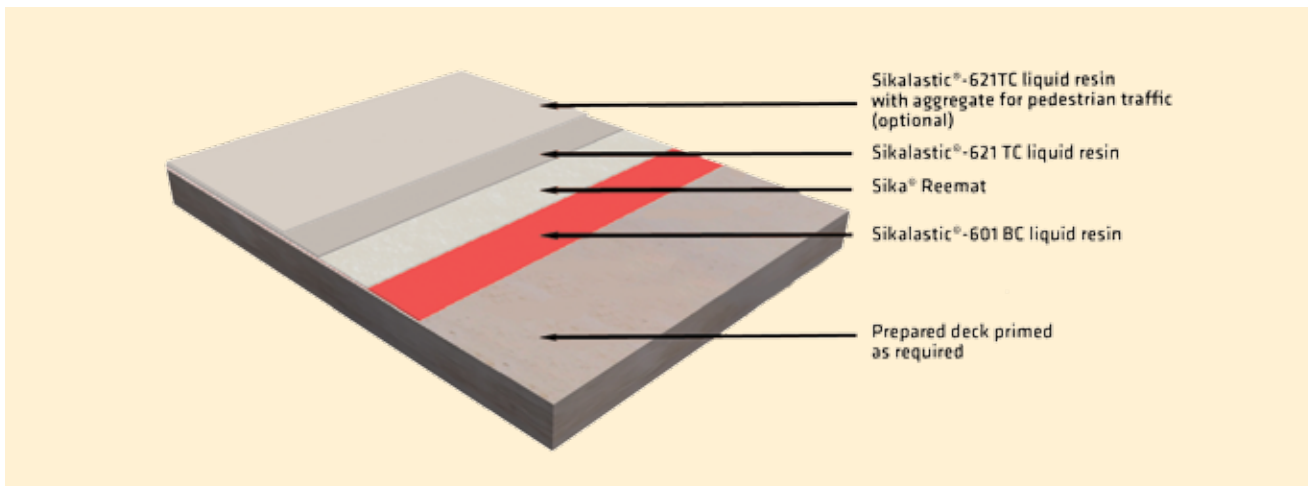
Sikalastic® RoofPro Systems are supported by a team of experienced Sika representatives and technicians, capable of providing cost-effective solutions for a wide range of application conditions. Do not hesitate to consult Sika Canada for any questions.

Depending on system configuration, Sikalastic® RoofPro systems are available with 10, 15, 20 and 25 year guarantees. Systems under guarantee require project registration. Please contact your local Sika Technical Sales Representative for more details.



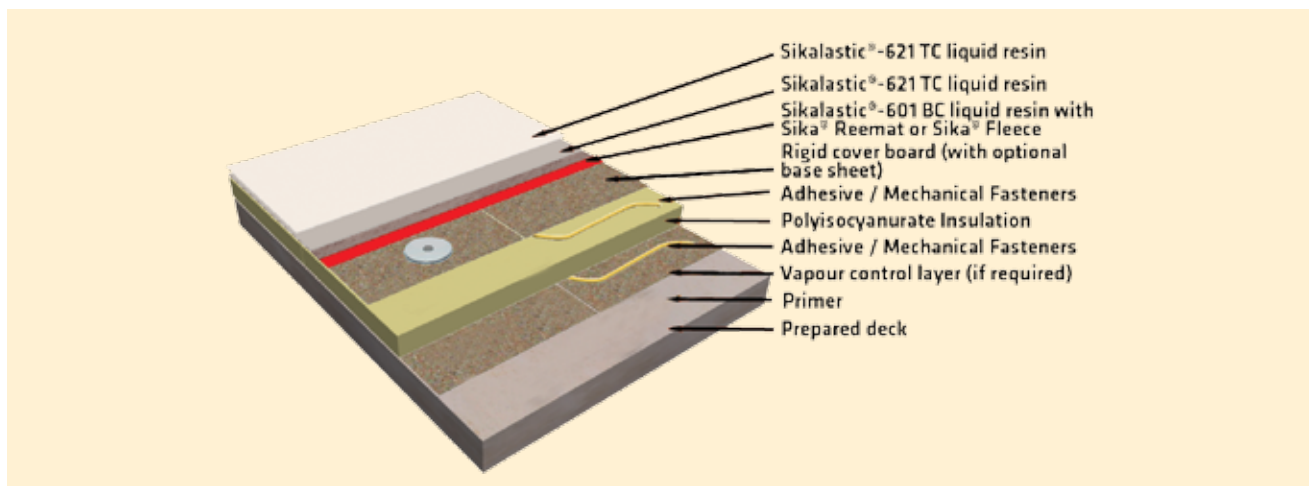
DIRECT-TO-SUBSTRATE ASSEMBLY

Suitable for direct application to structural concrete decks, plywood decks, and many existing smooth and granule-surfaced roofing systems.



BUILD-UP INSULATED ASSEMBLY

Suitable for applications requiring the installation of insulation, including new construction, roof replacement, and upgrading of existing roofing systems.



SIKA SOLUTIONS FROM ROOF TO FOUNDATIONS

Roofing Systems



Sarnafil®
Sikaplan®
Sikalastic®

Concrete Production



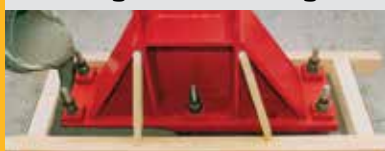
Sika® ViscoCrete®
Sika® Retarder®
Sika® AER^{CA}

Joint Sealing



Sikaflex®
Sikasil®
Sikadur® Combiflex

Grouting and Anchoring



SikaGrout®
Sikadur®
Sika AnchorFix®

Concrete Repair & Protection



Sika® MonoTop®
SikaTop®, SikaRepair®
Sikagard®

Structural Strengthening



Sikadur®, Sika® CarboDur®
SikaWrap®
Sika® CarboShear

Floor & Wall Systems



Sikafloor®
Sikagard®
Sikagard® Duroplast

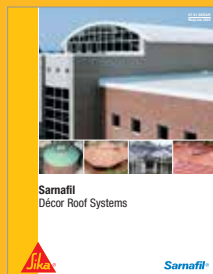
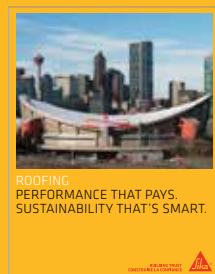
Waterproofing Systems



SikaProof®, SikaFuko®
Sika® Greenstreak®
SikaSwell®, SikaFix®

Sika Canada Inc., a member of the Sika Group, is a leader in the field of speciality chemicals for construction and manufacturing industries. Our product lines feature high quality roofing systems, concrete admixtures, mortars and resins, sealants and adhesives, structural strengthening components, industrial and decorative flooring, as well as protective coatings and waterproofing systems. Our expertise is borne out of a global presence and served by strong, local support. Sika has earned the trust of our customers for over 100 years by delivering the highest standards of commitment and partnership.

Also Available:



The Information, and in particular, the recommendations relating to the application and end-use of Sika products, are given in good faith based on Sika's current knowledge and experience of the products when properly stored, handled and applied under normal conditions, within their shelflife. In practice, the differences in materials, substrates and actual site conditions are such that no warranty in respect of merchantability or of fitness for a particular purpose, nor any liability arising out of any legal relationship whatsoever, can be inferred either from this information, or from any recommendations, or from any other advice offered. The information contained herein does not relieve the user of the products from testing them for the intended application and purpose. The proprietary rights of third parties must be observed. All orders are accepted subject to our current terms of sale and delivery. Users must always refer to the most recent issue of the local Product Data Sheet for the product concerned, copies of which will be supplied on request or may be downloaded from our website at: www.sika.ca

SIKA CANADA INC.

Head Office
601, avenue Delmar
Pointe-Claire, Quebec
H9R 4A9

Other locations

Toronto
Edmonton
Vancouver

1-800-933-SIKA
www.sika.ca

An ISO 9001 certified company
Pointe-Claire: ISO 14001 certified EMS

BUILDING TRUST
CONSTRUIRE LA CONFIANCE

