

**BUILDING TRUST
CONSTRUIRE LA CONFIANCE**



RESIDENTIAL CONSTRUCTION CONCRETE SOLUTIONS PRODUCT CATALOGUE



Know-how **from Site to Shelf**

For over a century, Sika products have been used successfully on jobsites across the world. There has never been a project too large or too small for Sika products. From major industrial and infrastructure projects to commercial and residential work, Sika's high-quality products have earned the confidence of professionals and are also available at your nearest home improvement centre or hardware store.

The Catalogue at a Glance:

Featuring an extensive range of Sika products, including some exciting new additions to our range, this pocket catalogue can be taken virtually anywhere. It allows users to refer to the entire product selection at a glance and quickly identify the material that meets their needs.

For Detailed Information:

The information contained in this catalogue is not intended to replace Product Data Sheets, which are available for consultation before starting any project. Surface preparation, mixing and installation procedures should always be taken into consideration to ensure success.

Who we are:

Sika Canada Inc., as a member of a global group of companies, supplies products to construction and manufacturing sectors. Our product line for building or renovation is capable of tackling works where high-quality roofing membranes, concrete and mortar admixtures, pre-bagged concrete and mortars, joint sealants and adhesives, repair and strengthening materials, protective flooring and above- or below-grade waterproofing systems are needed.

For additional information or project specific assistance, you can either call us at **1-800-933-7452**, visit us at **www.sika.ca** or download the **Sika Product Finder APP**.

Table of Contents

JOINT SEALANTS AND ADHESIVES

Sikaflex® Construction Sealant.....	5
Sikaflex® Self-Leveling Sealant	6
Sikaflex® Crack Flex	7
Sikaflex® Mortar Fix.....	8
Sikaflex® Concrete Fix.....	9
SikaBond® Construction Adhesive.....	10
Sikasil® GP	11

ANCHORING AND INJECTION RESINS

Sika AnchorFix®-1.....	12
Sika AnchorFix®-2020.....	13
Sika AnchorFix®-3001	14
Sika® Post Fix.....	15
Sika® Deck Fix NEW	16
Sikadur® Crack Fix	17

CONCRETE REPAIR MORTARS AND ADDITIVES

Sika Mix&Go®	18
Sika® FastFix Power Patch	19
Sika® PowerSet	20
SikaRepair® SHB	21
Sika MonoTop®-622 F NEW	22
Sika MonoTop®-623 F NEW	23
SikaQuick®-1000	24
SikaQuick®-2500	25
Sikacrete®-211 Flow PLUS NEW	26
Sikaset® Plug.....	27
Sikacrete®-06 SCC NEW	28
Sikacrete®-08 SCC	29
SikaGrout®-112 NEW	30
SikaGrout®-212	31
Sika® Latex R	32
Sikacem® Accelerator	33

SELF-LEVELLING SCREEDS, UNDERLAYMENTS AND PRIMERS

Sika® Level-125 ^{CA}	34
Sikafloor® Level-25 ^{CA}	35
Sikafloor® Level-50 ^{CA}	36
Sika® Level-01 Primer ^{CA}	37
Sika® Level-03 Primer ^{CA}	38

CRACK INJECTION

SikaFix® PU	39
SikaFix® Kit	40

EXPANSIVE FOAMS & ACCESSORIES

Sika Boom® AS	41
Sika Boom® AS-PRO	41
Sika Boom® AS Arctic	41
Sika Boom® PRO Cleaner	42
Sika Boom® PRO Dispenser Gun	42
Sika® Hand Cleaner Towels	42

WATERPROOFING SYSTEMS

SikaTop® Seal-107 ^{CA}	43
Sikagard® Natural Look Clear Sealer	44

WOOD FLOOR ADHESIVES

SikaBond®-T21 / -T35 / -T55	45
-----------------------------------	----

LEGEND: THE MUST-HAVES

.....	46-47
-------	-------

ALPHABETICAL INDEX OF PRODUCTS

.....	48-49
-------	-------

« I've used Sika products for a while and love the quality, performance and easy use of their products. Their products are great for both homeowners and professionals like myself.

***Sika not only makes it easy,
they make it right! »***



APPROVED PRODUCTS
PRODUITS APPROUVÉS

One-Component, Multi-Purpose, Polyurethane Sealant

WHERE TO USE

- All types of joints up to 13 mm (1/2 in) deep
- Vertical and horizontal applications
- Weatherproofing of joints in concrete or masonry structures, wood and metal
- Joints in walls, floors, balconies, door and window frames, roofing, etc.

ADVANTAGES

- Durable, weather-resistant and permanently elastic after curing
- Compatible with marble and natural stone without staining
- Excellent adhesion on most materials without priming
- May be painted over
- $\pm 25\%$ joint movement
- Service temperature: -40 to 77 °C (-40 to 170 °F)

YIELD (approximation)

- 3.72 lin. m (12.2 lin. ft) applying a bead of 13 mm (1/2 in) wide x 6 mm (1/4 in) deep

PACKAGING

- 300 mL (10.1 US fl. oz) cartridge
- Colours: White, Aluminum Grey, Limestone

The must-haves

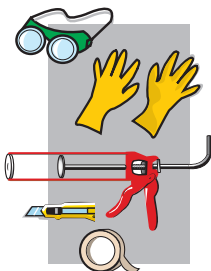


On the shelf



High-Performance, Self-Levelling Polyurethane Sealant

The must-haves



On the shelf



WHERE TO USE

- Sealing of **horizontal** movement joints in concrete and cementitious substrates

ADVANTAGES

- Easy-to-use; no mixing required
- Self-levelling; accelerated curing
- Permanently elastic and highly durable
- $\pm 25\%$ joint movement
- Service temperature: -40 to $77\text{ }^{\circ}\text{C}$ (-40 to $170\text{ }^{\circ}\text{F}$)

YIELD (approximation)

- 300 mL (10.1 US fl. oz) cartridge:
3.72 lin. m (12.2 lin. ft) applying a bead of
13 mm (1/2 in) wide by 6 mm (1/4 in) deep
- 858 mL (29 US fl. oz) cartridge:
11 lin. m (36 lin. ft) applying a bead of
13 mm (1/2 in) wide by 6 mm (1/4 in) deep

PACKAGING

- 300 mL (10.1 US fl. oz) cartridge
 - 858 mL (29 US fl. oz) cartridge
- Colour: Concrete Grey*



High Performance, Textured, Self-Levelling, One-Part Polyurethane Sealant For Sealing Cracks

WHERE TO USE

- Sealing of **horizontal** movement joints in concrete and cementitious substrates

ADVANTAGES

- Textured appearance to blend with rough surfaces (concrete or stucco)
- Easy-to-use; no mixing required
- Self-levelling; accelerated curing
- Permanently elastic and highly durable
- $\pm 25\%$ joint movement
- Service temperature: -40 to $77\text{ }^{\circ}\text{C}$ (-40 to $170\text{ }^{\circ}\text{F}$)

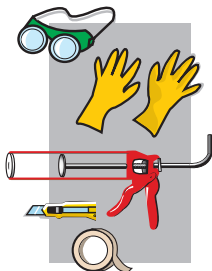
YIELD (approximation)

- 3.72 lin. m (12.2 lin. ft) applying a bead of 13 mm (1/2 in) wide by 6 mm (1/4 in) deep

PACKAGING

- 300 mL (10.1 US fl. oz) cartridge
Colour: Grey

The must-haves



On the shelf



One-Component, All Purpose, Polyurethane Sealant

The must-haves



On the shelf



WHERE TO USE

- Crack repair in brick walls (up to 13 mm (1/2 in) deep)
- Weatherproofing of joints in concrete or masonry structures, wood and metal
- Joints in walls, floors, balconies, door and window frames

ADVANTAGES

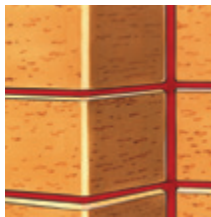
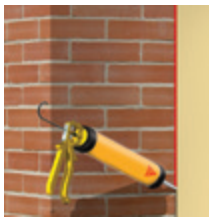
- Excellent adhesion on most materials without priming
- Textured appearance; ideal for use on rough surfaces or stucco
- Durable, resistant, elastic and non-sagging material
- Excellent resistance to aging and weathering
- Service temperature: -40 to 77 °C (-40 to 170 °F)

YIELD (approximation)

- 3.72 lin. m (12.2 lin. ft) applying a bead of 13 mm (1/2 in) wide by 6 mm (1/4 in) deep

PACKAGING

- 300 mL (10.1 US fl. oz) cartridge
Colour: Limestone



One-Component, Polyurethane Elastomeric Sealant For Cracks, Gaps And Joints

WHERE TO USE

- Weatherproofing of joints, cracks or gaps in concrete and masonry structures, stucco and metal
- Joints in walls, floors, balconies, door and window frames
- Vertical and horizontal applications
- Joints and cracks up to 13 mm (1/2 in) deep

ADVANTAGES

- $\pm 25\%$ joint movement
- Highly elastic
- Exceptional resistance to cutting and tearing
- Excellent adhesion on most substrates without priming
- May be painted over
- Service temperature: -40 to 77°C (-40 to 170°F)

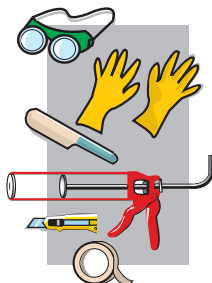
YIELD (approximation)

- 3.72 lin. m (12.2 lin. ft) applying a bead of 13 mm (1/2 in) wide by 6 mm (1/4 in) deep

PACKAGING

- 300 mL (10.1 US fl. oz) cartridge
- Colour: Limestone

The must-haves

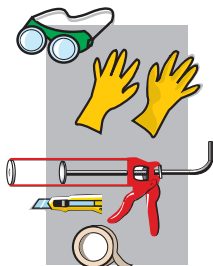


On the shelf



One-Part, Advanced Polyurethane, Elastomeric Adhesive

The must-haves



On the shelf



WHERE TO USE

- Interior finishing works (mouldings, sills, framing of doors and windows)
- Exterior works (landscaping etc.)
- Sealed and bolted lap joints
- Heating, ventilation and air conditioning works

ADVANTAGES

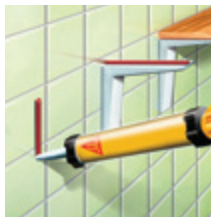
- Adheres to concrete, cement, brick, wood, metal, glass, plastic, ceramic epoxy, etc.
- Elastic and durable
- Freeze / thaw resistant
- Can be painted over
- Fast curing
- May be immersed; approved for contact with potable water
- Service temperature: -40 to 77 °C (-40 to 170 °F)

YIELD (approximation)

- 3.72 lin. m (12.2 lin. ft) applying a bead of 13 mm (1/2 in) wide by 6 mm (1/4 in) thick
- 10.7 lin. m (35 lin. ft) applying a bead of 13 mm (1/2 in) wide by 6 mm (1/4 in) thick

PACKAGING

- 300 mL (10.1 US fl. oz) cartridge
- 858 mL (29 US fl. oz) cartridge



General Purpose, Acetoxy Cure, Anti-Microbial, Silicone Sealant/Adhesive

WHERE TO USE

- Conventional glazing, door and window joints
- Fitting-out kitchens, bathrooms and sealing sanitary units
- Plumbing, heating, ventilation and air conditioning works

ADVANTAGES

- Easily applied with a gun; all-season product, ideal for cold conditions
- Fast curing
- Excellent flexibility
- Bonds to most materials without priming.
- Service temperature: -62.2 to 232 °C (-80 to 450 °F)

YIELD (approximation)

- 7.3 lin. m (24 lin. ft) for a 6 mm (1/4 in) wide joint by 6 mm (1/4 in) deep

PACKAGING

- 295 mL (10 US fl. oz) cartridge
Colours: Almond, Aluminium, Black, Bronze, Translucent, Metallized Aluminum, White, Red (High Temperature)

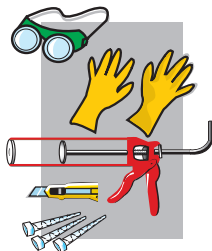
The must-haves



On the shelf



Fast-Curing, Anchoring Adhesive

The must-haves**WHERE TO USE**

- Anchoring of bolts, threaded rods, rebars and fastening systems in concrete, rock, stone and masonry
- Vertical and horizontal applications
- Allows for fast crack repairs to concrete

ADVANTAGES

- Fast setting, hardens in a few minutes
- Can be used at low temperatures (-10 °C / 14 °F)
- Low odour
- High strength; twice as strong as concrete
- High load capacity

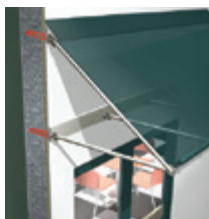
YIELD

- Refer to Product Data Sheet

On the shelf**PACKAGING**

- 300 mL (10.1 US fl. oz) cartridge *

** Additional static mixers sold separately*



High Performance, Professional Grade Epoxy Acrylate Anchoring Adhesive

WHERE TO USE

- Anchoring of all grades of rebars
- Applications exposed to dynamic loads and vibrations (exterior use).
- Suitable as “pick proof” sealant for secure facilities

ADVANTAGES

- Allows work in difficult environments (down to -10 °C [14 °F] and damp substrates)
- Sets up in dry or damp holes.
- Suitable for cracked and uncracked concrete
- Styrene-free and odourless

YIELD

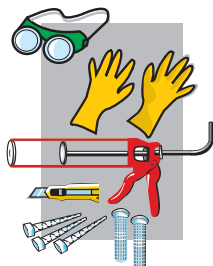
- Refer to Product Data Sheet

PACKAGING

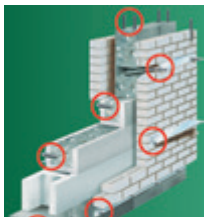
- 300 mL (10.1 US fl. oz) cartridge *
- Also available: 850 mL (28.7 US fl. oz) cartridge *

* Additional static mixers sold separately

The must-haves



On the shelf



High-Strength, High-Load Capacity and Low-Voc, Pure Epoxy Anchoring Adhesive with Extended Working Time

The must-haves



On the shelf



WHERE TO USE

- Anchoring of rebars or threaded rods in solid concrete, masonry structures, etc.
- Applications subjected to vibrations and dynamic loads
- Structural anchoring of steel to concrete (railings, safety barriers, balcony stanchions, signs, etc.)

ADVANTAGES

- Applied using standard caulking gun
- Sets up in dry, wet or flooded conditions
- Cures down to 0 °C (32 °F) when material is conditioned to 5 °C (41 °F).
- Extended open and gel times
- May be used as an adhesive or as an anchoring gel
- Styrene-free and low VOC

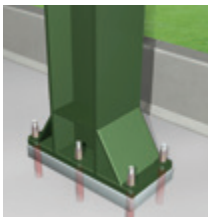
YIELD

- Refer to Product Data Sheet

PACKAGING

- 250 mL (8.4 US fl. oz) cartridge *

** Additional static mixers sold separately*



Easy-To-Prepare, Mix-In-Bag and Fast-Setting Polyurethane Foam for Supporting and Backfilling Fence Posts

WHERE TO USE

- Fence and gate posts
- Signage posts
- Mail-box posts

ADVANTAGES

- No mixing tools or water required
- Easy and fast to prepare; just roll-up pouch, mix, open and pour
- Sets in 3 min (temperature related)
- Suitable for use with wooden, PVC and steel posts
- May be used in cold conditions without the need for additives

YIELD (approximation)

- One (1) pouch fills a 48 in deep x 6 in diameter hole when installing a 4 in x 4 in square post

PACKAGING

- 979 mL (33 US fl. oz) pouch

The must-haves



On the shelf



Fast-Setting Polyurethane Foam for Supporting and Backfilling Deck Posts

The must-haves



On the shelf



WHERE TO USE

- Deck Posts
(only for decks up to 2 ft above grade)

ADVANTAGES

- No mixing tools or water required
- Easy and fast to prepare; just roll-up pouch, mix, open and pour
- Sets in 3 min (temperature related)
- Suitable for use with wooden, PVC and steel posts
- May be used in cold conditions without the need for additives

YIELD (approximation)

- One (1) pouch fills a 48 in deep x 6 in diameter hole when installing a 4 x 4 in square post

PACKAGING

- 979 mL (33 US fl. oz) pouch



Low-Viscosity And High-Strength Epoxy Resin Injection Resin, Sealer and Adhesive

WHERE TO USE

- Low pressure injection of cracks in structural concrete, masonry, wood, etc.
- Gravity feeding and sealing of fine cracks in horizontal concrete, masonry, wood, etc.

ADVANTAGES

- Convenient, easy-to-use single tube cartridge; fits standard caulking gun
- Low viscosity; allows material to penetrate and seal fine, hairline cracks
- Moisture tolerance: for “can’t dry” cracks and surfaces

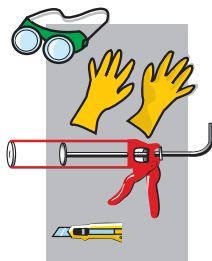
YIELD (*approximation*)

- 180 mL (6 US fl. oz) of usable resin per cartridge

PACKAGING

- 180 mL (6 US fl. oz) cartridge
Colour: Clear-amber

The must-haves



On the shelf



Easy-To-Handle and Prepare, Patch and Repair Mortar

The must-haves



WHERE TO USE

- Small domestic repairs to concrete and masonry (vertical / horizontal and overhead applications)
- Floors, walls, porches and sidewalks

ADVANTAGES

- No tools required, just add water directly to the bag and mix
- Factory-blended and quality controlled
- Good build up
- Fast-setting
- Easy to finish

YIELD (approximation)

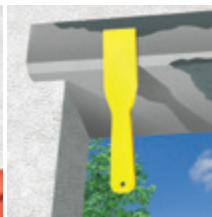
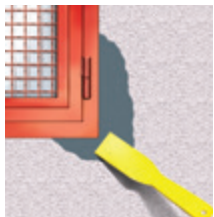
- 0.7 L (23.7 US fl. oz) of mortar per bag

On the shelf



PACKAGING

- 1.25 kg (2.77 lb) bag



Rapid Curing, Two-Component, Flowable, High Strength Repair Mortar for Horizontal Repairs

WHERE TO USE

- Ideal for small repairs (holes, spalls, etc.) on horizontal concrete surfaces

ADVANTAGES

- Pre-dosed, easy to use, apply and finish
- In-bag mixing requiring no specific tools
- Does not require water addition
- Excellent bond strength to concrete
- Quick hardening allowing vehicular traffic after one (1) hour

YIELD (approximation)

- 0.092 m² (1 ft²) by 13 mm (1/2 in) deep

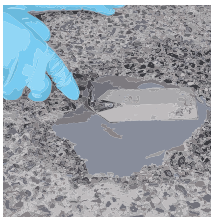
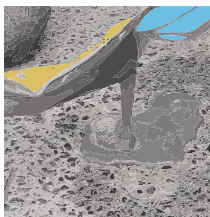
PACKAGING

- 858 mL (29 oz fl. US) pouch

The must-haves

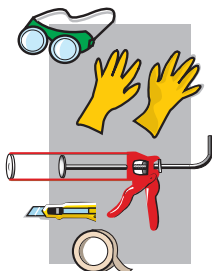


On the shelf



Two-Component, Fast Setting Polyester Gap Filler

The must-haves



WHERE TO USE

- Filling cracks and spalls in stucco and concrete surfaces including: walkways and sidewalks, steps, decks, patios and walls.

ADVANTAGES

- Fast curing for fast repairs
- Easy to install
- Excellent for minor repairs to horizontal or vertical surfaces
- Convenient packaging

YIELD (approximation)

- Cracks: 10 mm x 10 mm x 2,6 m
- Spalls: 100 mm x 100 mm x 25 mm

On the shelf



PACKAGING

- 300 mL (10.1 US fl. oz)
- Colour: Grey*



One-Component, Early Strength-Gaining, Cementitious Patching Mortar

WHERE TO USE

- Repair works and resurfacing of concrete and mortar
- Application below, above or on grade
- Horizontal, vertical and overhead applications

ADVANTAGES

- Easy-to-use
- Surface may be open to pedestrian traffic after 4 to 5 hours
- Easy to trowel and to finish
- Add Sika® Latex R for enhanced performance and repairs (applied in layers) up to 76 mm (3 in)

YIELD (approximation)

- 5 kg (11 lb) bag yields 0.46 m² (5 ft²) at 6 mm (1/4 in) thickness

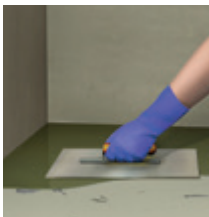
PACKAGING

- 5 kg (11 lb) bag
- 10 kg (22 lb) pail
- 20 kg (44 lb) bag

The must-haves



On the shelf



One-Component, Polymer-Modified, Fibre-Reinforced Horizontal and Vertical Repair and Resurfacing Mortar with Integral Corrosion Inhibitor

The must-haves



WHERE TO USE

- Exterior and interior applications on **horizontal** and **vertical** surfaces
- On, above, and below grade repairs
- Resurfacing of cast-in-place, precast and tilt-up structures

ADVANTAGES

- Fibre-reinforced improving overall resistance and performance
- Pre-bagged for quality control and predictable performance
- Easy to prepare
- Excellent adherence to substrate
- Extended working time (ideal for warm conditions)

On the shelf

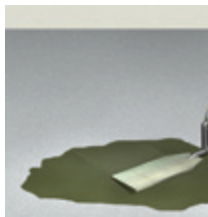


YIELD (approximation)

- Approx. 11.6 L (0.39 ft³) per 22.7 kg (50 lb) bag

PACKAGING

- 22.7 kg (50 lb) bag



One-Component, Polymer-Modified, Fibre-Reinforced
Overhead and Vertical Repair and Reprofilling Mortar
with Integral Corrosion Inhibitor

WHERE TO USE

- Exterior and interior applications
- On, above, and below grade repairs
- **Vertical, horizontal** and **overhead** applications
- Resurfacing of cast-in-place, precast and tilt-up structures

ADVANTAGES

- Fibre-reinforced improving overall resistance and performance.
- Pre-bagged for quality control and predictable performance.
- Easy to prepare
- Excellent adherence to substrate
- Extended working time (ideal for warm conditions)

YIELD (approximation)

- Approx. 12.9 L (0.45 ft³) per 22.7 kg (50 lb) bag

PACKAGING

- 22.7 kg (50 lb) bag

The must-haves



On the shelf



Rapid-Hardening Repair Mortar with Extended Working Time

The must-haves



WHERE TO USE

- For structural repairs on horizontal concrete surfaces
- Roadways, parking, ramps and concrete walkways

ADVANTAGES

- Easy-to-use and economical material
- Partial or full depth repairs on concrete
- Extended working time (30 min); ideal for hot weather applications
- Resistance to freeze / thaw cycles
- Open to foot traffic after 4 h or 6 h for vehicles (reaches 1000 psi after 1 h)

On the shelf

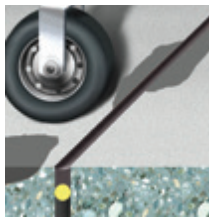
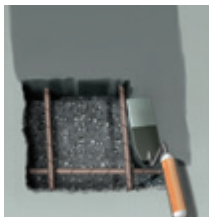


YIELD (approximation)

- 0.93 m² (10 ft²) at 13 mm (1/2 in) thickness
- 0.46 m² (5 ft²) at 25 mm (1 in) thickness

PACKAGING

- 25 kg (55 lb) bag



Very Rapid-Hardening Repair Mortar

WHERE TO USE

- Structural repairs on horizontal concrete surfaces
- Roadworks: concrete roadways and pavements
- Concrete structures: bridges, parking areas, ramps and walkways

ADVANTAGES

- Easy-to-use and economical material
- Allows for full depth repairs on concrete
- May be coated after 4 h (with an epoxy type coating)
- Resistance to freeze / thaw cycles
- Open to foot traffic after 45 min (1 h for vehicles)

YIELD (approximation)

- 13 L (3.43 US gal.) / (0.46 ft³) of mortar or 0.93 m² (10 ft²) at 13 mm (1/2 in) thickness

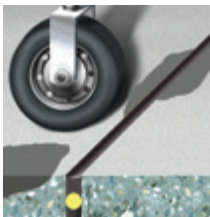
PACKAGING

- 25 kg (55 lb) bag

The must-haves



On the shelf



One-Component, Cementitious Concrete Mix Plus Migrating Corrosion Inhibitor

The must-haves



WHERE TO USE

- Structural repair of parking facilities, walkways, balconies, etc.
- Filler for voids and cavities
- Partial or full depth structural repairs

ADVANTAGES

- Increased resistance to deicing salts.
- Good freeze/thaw resistance.
- High bond strength
- Easy to finish
- Applicable at thicknesses ranging from 25 to 305 mm (1 to 12 in)

YIELD (approximation)

- 13 L (3.43 US gal.) per bag or 0.46 m² (5 ft²) at 25 mm (1 in) thickness

On the shelf



PACKAGING

- 25 kg (55 lb) bag



Fast-Setting Compound for Leak Sealing and Concrete Repairs

WHERE TO USE

- Sealing of leaks or quick repairs to concrete or masonry structures
- Floors, walls and sidewalks
- Fast repairs on precast concrete units

ADVANTAGES

- Ready-to-use, only water is required
- Fast setting (1 1/2 to 2 min)
- Hardens against the flow of water
- Plugs leaks even where water is running

YIELD (approximation)

- 2.9 L (0.1 ft³) of mortar or 25 plugs per 5 kg (11 lb) bag

PACKAGING

- 1 kg (2.2 lb) bag
- 5 kg (11 lb) bag
- 22.7 kg (50 lb) pail

The must-haves



On the shelf



All-Purpose Self-Compacting Concrete (SCC)

The must-haves**WHERE TO USE**

- Parking areas, walkways, balconies, terraces, patios
- For projects requiring poured or pumped concrete into forms

AVANTAGES

- Partial or full depth repairs
- No vibration or finishing tools required for levelling
- Superior resistance to freeze/thaw cycles
- Aesthetic, high-quality surface finish
- Self-compacting; for concrete thicknesses **between 38 to 150 mm (1½ to 6 in)**

On the shelf**YIELD (approximation)**

- Approx. 12 L (0,42 ft³) of fresh concrete per bag

PACKAGING

- 25 kg (55 lb) bag



Self-Compacting Concrete (SCC) Based on Sika® Viscocrete® Technology

WHERE TO USE

- Parking areas, walkways, balconies, terraces, patios
- For projects requiring poured or pumped concrete into forms

ADVANTAGES

- Partial or full depth repairs
- No vibration or finishing tools required for levelling
- Superior resistance to freeze / thaw cycles
- Aesthetic, high-quality surface finish
- Self-compacting; for concrete thicknesses **between 25 to 450 mm (1 to 18 in)**

YIELD (approximation)

- 13 L (3.43 US gal.) per bag or
0.46 m² (5 ft²) at 25 mm (1 in) thickness

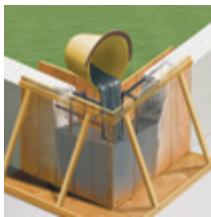
PACKAGING

- 25 kg (55 lb) bag

The must-haves



On the shelf



All Purpose, Non-Shrink And Non-Metallic, Cementitious Grout

The must-haves



On the shelf



WHERE TO USE

- Grouting column base plates
- Grouting anchor bolts, dowels and hand rails
- Grouting under precast, cast-in-place, post-tensioned and pre-stressed concrete members
- General construction applications

ADVANTAGES

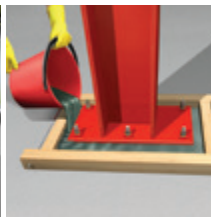
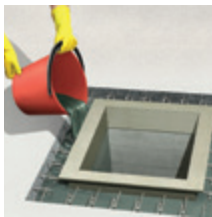
- Can be mixed and placed from dry pack, plastic and flowable consistencies using relatively low water demand
- Improved resistance to water wash-out
- Excellent resistance to freeze-thaw cycling and salt-scaling in the presence of de-icing salts
- Application thicknesses ranging from 25 to 50 mm (1 to 2 in)

YIELD (approximation)

- 13.6 L (0.48 ft³) of flowable grout per bag

PACKAGING

- 25 kg (55 lb) bag



High Quality, Versatile and Non-Shrink, Cementitious Grout

WHERE TO USE

- Interior/exterior works: Grouting applications where a high performance grout is required
- Structural grouting of columns, stanchions, base plates, bearing plates, etc.

ADVANTAGES

- Factory blended; ready-to-use
- Versatility; dry-pack, pourable or fluid
- Superior resistance to freeze / thaw cycles
- Non-corrosive
- Application thicknesses ranging from 25 to 150 mm (1 to 6 in)

YIELD (approximation)

- 13 L (0.46 ft³) of fluid grout per bag

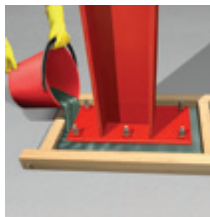
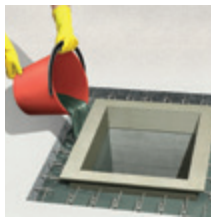
PACKAGING

- 25 kg (55 lb) bag

The must-haves



On the shelf



Acrylic Latex, Bonding Agent and Admixture for Cement Mortar And Concrete

The must-haves



WHERE TO USE

- May be used as an admixture with concrete or mortar or as a brushed-on cement / sand bonding agent
- Ideal as an additive to mortar and stucco to improve performance

ADVANTAGES

- Improves the adhesion of concrete and mortar
- Increases impermeability and resistance to freeze / thaw cycles
- Improves concrete or mortar workability
- Increases strength and durability

YIELD

- Replace the quantity of water by an equal amount of Sika® Latex R

On the shelf



PACKAGING

- 1 L (0.26 US gal.) jug
- 3.5 L (0.92 US gal.) jug



Hardening Accelerating Admixture for Cementitious Concretes, Mortars and Grouts

WHERE TO USE

- Fast track concreting, repairs or grouting requiring high early strength gains
- Cold weather concreting, repairing or grouting

ADVANTAGES

- Accelerates initial early strength of concrete, mortar or cementitious grouts
- Allows concrete, mortar and grout use at lower temperatures, -5 °C (23 °F)
- Easy to finish; early form removal
- Reduces the need for heating and insulation while curing

YIELD (approximation)

- 150 mL (5 US fl. oz) bottle / 25 kg (55 lb) bag of cementitious material

PACKAGING

- 150 mL (5 US fl. oz) bottle

The must-haves



On the shelf



Polymer-Modified, Cementitious, Self-Levelling Underlayment

The must-haves



On the shelf



WHERE TO USE

- Levelling of new or existing concrete or plywood surfaces before the installation of a final floor covering
- Residential, commercial and institutional use
- Typical thickness application 1 - 38 mm (1/25 - 1 1/2 in)

ADVANTAGES

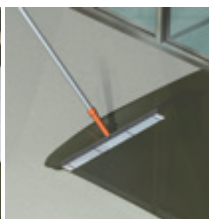
- Improved formula with increased fluidity and self-levelling properties; manual or pumped applications
- Provides a flat and smooth substrate
- Rapid drying (open to foot traffic after 4 h at 23 °C)
- Tile or natural stone can be installed after 24 h
- Tiles, wood floor or carpet can be installed after 1 to 3 days
- Compatible with in-floor radiant heating

YIELD (approximation)

- 1.3 m² (14 ft²) per bag, at 10 mm (3/8 in) thickness

PACKAGING

- 22.7 kg (50 lb) bag



Cementitious, Self-Levelling Floor Screed

WHERE TO USE

- Levelling of new or existing concrete surfaces before the installation of a final floor surface or covering
- Typical thickness application: 5 - 25 mm (3/16 - 1 in)
- Industrial and commercial use
- May be left uncovered as a wearing surface for light commercial applications
- May be over-coated with epoxy or resin floor finishes

ADVANTAGES

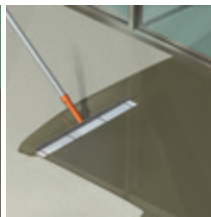
- Very fluid and self-levelling material; pumpable or manual applications
- Provides a flat and smooth substrate
- Rapid drying and low odour
- Open to foot traffic after 4 h

YIELD (approximation)

- 2.8 m² (30 pi²) per bag, at 5 mm (3/16 in) thickness

PACKAGING

- 25 kg (55 lb) bag

The must-haves*On the shelf*

Deep Section, Cementitious, Self-Levelling, Sub-Floor Screed

The must-haves



WHERE TO USE

- Creation of a surface ready for a final floor finish such as tiles or epoxy coating
- Typical thickness application: 20 - 50 mm (3/4 - 2 in)
- Industrial and commercial use
- Levelling of interior floors (old floors, concrete precast slabs, etc.)
- Designed for use with resin floor finishes

ADVANTAGES

- Very fluid and self-levelling material; pumpable or manual applications
- Provides a flat and smooth substrate
- Rapid drying and low odour
- Open to foot traffic after 6 h

On the shelf

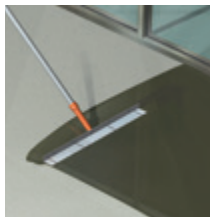


YIELD (approximation)

- 0.64 m² (6.9 ft²)) per bag,
at 20 mm (3/4 in) thickness

PACKAGING

- 25 kg (55 lb) bag



Concrete Primer and Sealer For Use With Sika® Level Underlayments and Sikafloor® Level Overlayments

WHERE TO USE

- Priming and sealing of porous surfaces including concrete, cement and mortar substrates
- As an adhesion promoter for porous surfaces before levelling

ADVANTAGES

- Economical primer
- Ready-to-use; no dilution required
- Fast-drying; allows application of levelling mortars after 2 - 24 h
- Water-based; solvent-free
- Reduces outgassing and bubble formation in the underlayments/screeds

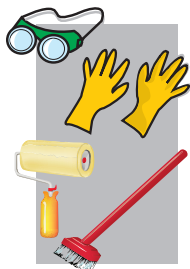
YIELD (approximation)

- 8 - 12 m²/L (325 - 500 ft²/US gal.) per coat

PACKAGING

- 3.78 L (1 US gal.) jug
- 18.9 L (5 US gal.) pail

The must-haves



On the shelf



Versatile Primer and Adhesion Promoter for Use On Concrete and Wood Beneath Sika® Level Underlayments

The must-haves



WHERE TO USE

- Concrete and cement screed
- Wooden subfloor (plywood)

ADVANTAGES

- Ready-to-use; just stir and apply
- Pigmented to better visualize application
- Water-based and solvent-free
- Fast-drying; allows application of levelling mortars after 1 - 6 h
- Reduces bubble formation in self-levelling underlayments

YIELD (approximation)

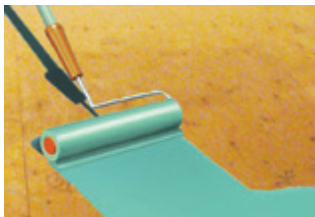
- 4.2 m²/L (170 ft²/US gal.) on concrete
- 5.6 m²/L (230 ft²/US gal.) on plywood

On the shelf



PACKAGING

- 1 L (33.8 US fl. oz) pot
- 4 L (1.05 US gal.) jug



Flexible, Expanding Polyurethane Foam for Sealing Damp or Wet Cracks

WHERE TO USE

- Foundations and basement walls
- Masonry surfaces, cracked or « honey combed » concrete
- Pipes and utilities penetrations

ADVANTAGES

- Easy to inject water reacted expanding foam.
- Available as individual cartridge or as part of SikaFix® Kit.
- High bond strength even to damp surfaces
- Waterproofs and seals cracks quickly and efficiently

YIELD (approximation)

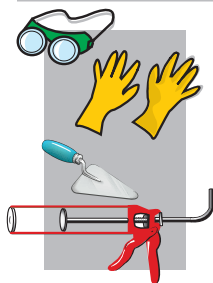
- 4.8 m (16 ft) of cracks [200 mm (8 in) deep x 3 mm (1/8 in) wide]

PACKAGING

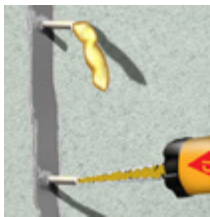
- 250 mL (8.45 US fl. oz) cartridge*

* Requires SikaSet® Plug and Sika® Injection T's supplied separately or as SikaFix® Kit.

The must-haves

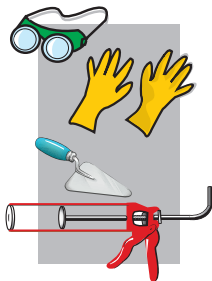


On the shelf



Ready-Assembled, Injection Repair Kit for Cracked and Leaking Foundations

The must-haves



WHERE TO USE

- Foundations and basement walls
- Masonry surfaces, cracked or "honey combed" concrete
- Pipes and utilities penetrations

ADVANTAGES

- Easy to use, self-contained kit
- Includes **SikaFix® PU** expanding foam, **SikaSet® Plug** quick-set mortar and **Sika® injection T's**
- Plugs and fills actively leaking cracks and defects
- Provides non-shrink, water tight and long lasting flexible seal.

On the shelf

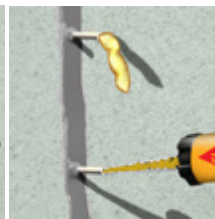


YIELD (approximation)

- 4.8 m (16 ft) of cracks [200 mm (8 in) deep x 3 mm (1/8 in) wide]

PACKAGING

- Kit contains:
 - 250 mL (8.45 US fl. oz) cartridge of **SikaFix® PU**;
 - 3 bags of 1 kg (2.2 lb) **SikaSet® Plug**;
 - 20 **Sika® Injection T's**



All Season, One-component, Low Expansion, Polyurethane Foams

WHERE TO USE

- Weather sealing and insulation of windows, doors, gaps, cracks and utilities perforations, pest blocker

ADVANTAGES

- Value pack formats
- May be applied year around at temperatures between -12 °C (-25 °C ARCTIC) and 30 °C
- Low pressure expansion helps prevent bowing or warping of window frames and other elements
- Dispenser gun available for larger projects
- Easy cleanup of dispenser gun / straw with Sika Boom® PRO Cleaner
- Environmentally Friendly: CFC and HCFC-free
- Low VOC content: < 2 g/L

The must-haves



On the shelf

YIELD

- | | |
|-------------------------|--------------|
| ■ Sika Boom® Arctic | 65 L (± 5 L) |
| ■ Sika Boom® AS/AS PRO | 40 L (± 5 L) |
| ■ Sika Boom® AS (12 oz) | 25 L (± 5 L) |

PACKAGING (Cans)

- | | |
|------------------------|----------------|
| ■ Sika Boom® Arctic | 750 mL (36 oz) |
| ■ Sika Boom® AS/AS PRO | 750 mL (30 oz) |
| ■ Sika Boom® AS | 354 mL (12 oz) |



Sika Boom® PRO Dispenser Gun, Sika Boom® PRO Cleaner, Sika® Hand Cleaner Towels

On the shelf



WHERE TO USE

- **Sika Boom® PRO Dispenser Gun**
Gun may be used for larger jobs/professionals, allowing precise, efficient and comfortable application
- Clean equipment and uncured foam with **Sika Boom® PRO Cleaner**
- **Sika® Hand Cleaner Towels**
are ideal to clean hands and wipe up uncured material from equipment and surfaces

PACKAGING

- Sika Boom® PRO Dispenser Gun (1 unit)
- Sika Boom® PRO Cleaner (500 mL [460 g] can)
- Sika® Hand Cleaner Towels (72 wipes)

Flexible, Waterproof and Protective Slurry Mortar

WHERE TO USE

- Horizontal surfaces subject to light foot traffic, such as balconies
- Waterproofing of concrete drinking water tanks, reservoirs and clearwells
- Interior/exterior, horizontal/vertical water- and damp-proofing of concrete, mortar, masonry and styrofoam
- Sealing static hairline cracks in concrete

ADVANTAGES

- Fast and easy mixing and application
- Apply with a brush, roller, trowel or hopper spray
- Protection against water penetration, while being water vapour permeable
- Protection of concrete against de-icing salts and freeze / thaw cycles

YIELD (approximation)

- 2 kg/m² (4.4 lb/ft²)
(use 1 coat for dampproofing and 2 coats for waterproofing)

PACKAGING

- 18 kg (36.9 lb) pail containing:
 - 14.7 kg (32 lb) of powder;
 - 3.5 L (0.92 US gal.) of polymer;
 - 15.2 m x 50 mm (50 ft x 2 in) fibre glass tape roll

The must-haves



On the shelf



Water-Based, Low-Voc, Water-Repelling and Salt Screening Silane/ Siloxane Sealer

The must-haves



WHERE TO USE

- Horizontal and vertical concrete and masonry surfaces (walls, parapets, piers, sidewalks, clay pavers, concrete/exposed aggregate concrete pavers)
- Water-repelling and salt-screening treatment for new or existing surfaces

ADVANTAGES

- Easy to apply by brush, roller or sprayer
- Long-term protection against elements, chlorides and de-icing salts
- Highly penetrative; does not leave a surface film
- Helps resist dirt accumulation and fungi and moss growth
- Water-based, low-odour and low-VOC content
- Clear when dry

On the shelf



YIELD (approximation)

- 50 - 120 m² (500 - 1 300 ft²) per pail

PACKAGING

- 20 L (5.3 US gal.) pail



Trowel-Grade, Polyurethane Adhesives for Wood Flooring

WHERE TO USE (*select the right product for your application*)

- Solid and engineered wood flooring (strips, longstrips, planks, panels, boards) mosaic parquet, industrial parquet

ADVANTAGES

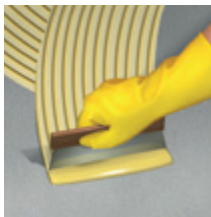
- Permanently elastic adhesives
- Easy to trowel
- Water exempt; will not cause swelling of wood flooring

YIELD (*approximation, using a P5 Trowel*)

- T21 : 1 - 1.2 m²/L (45 - 50 ft²/US gal.)
- T35 : 1.1 - 1.2 m²/L (45 - 50 ft²/ US gal.)
- T55 : 1.23 m²/L (50 ft²/US gal.)

PACKAGING

- T21: 15.14 L (4 US gal.) pail
- T35: 18.9 L (5 US gal.) pail
- T55: 18.9 L (5 US gal.) pail

The must-haves*On the shelf*

Legend : The must-haves

Safety glasses



Chemically resistant gloves



Sealant finishing tool



Suitable caulking gun



Suitable applicator gun



Static mixing nozzles



Safety contractor knife



Drill and mixing paddle



Steel trowel (straight-edge)



Steel trowel (square or V-notched)



Detailing/edging trowel



Wood or plastic float



Mixing container



Suitable nap roller



Pin screed/gauge rake



Spike roller



Suitable size and bristle brush



Stiff bristle broom



Temporary masking tape



Low pressure sprayer



Scissors - Measuring tape - Level



All equipment illustrations and recommendations are for guidance purposes only. Product and Safety Data Sheets must be referred to for specifics.

We reserve the right to change product packaging and specifications without prior notice, provided they ensure product improvement. Always refer to the most recent issue of the Product Data Sheet for the product concerned.

Index

Sika AnchorFix®-1	12
Sika AnchorFix®-2020	13
Sika AnchorFix®-3001	14
Sika Boom® AS	41
Sika Boom® AS Arctic	41
Sika Boom® AS-PRO	41
Sika Boom® PRO Cleaner	42
Sika Boom® PRO Dispenser Gun	42
Sika® Deck Fix.....	16
Sika® FastFix Power Patch	19
Sika® Hand Cleaner Towels	42
Sika® Latex R.....	32
Sika® Level-01 Primer ^{CA}	37
Sika® Level-03 Primer ^{CA}	38
Sika® Level-125 ^{CA}	34
Sika Mix&Go®	18
Sika MonoTop®-622 F	22
Sika MonoTop®-623 F	23
Sika® Post Fix	15
Sika® PowerSet	20
SikaBond® Construction Adhesive	10
SikaBond®-T21 / -T35 / -T55	45
Sikacem® Accelerator.....	33

Sikacrete®-06 SCC.....	28
Sikacrete®-08 SCC.....	29
Sikacrete®-211 Flow PLUS	26
Sikadur® Crack Fix	17
SikaFix® Kit.....	40
SikaFix® PU.....	39
Sikaflex® Concrete Fix.....	9
Sikaflex® Construction Sealant	5
Sikaflex® Crack Flex	7
Sikaflex® Mortar Fix	8
Sikaflex® Self-Leveling Sealant.....	6
Sikafloor® Level-25 ^{CA}	35
Sikafloor® Level-50 ^{CA}	36
Sikagard® Natural Look Clear Sealer	44
SikaGrout®-112	30
SikaGrout®-212	31
SikaQuick®-1000	24
SikaQuick®-2500	25
SikaRepair® SHB	21
Sikaset® Plug.....	27
Sikasil® GP	11
SikaTop® Seal-107 ^{CA}	41

This image shows a single page of white paper with horizontal blue or grey ruling lines. The lines are evenly spaced and run across the width of the page, leaving small margins at the top and bottom. There are no vertical margin lines, and the page is completely devoid of any text, drawings, or other markings.

PRODUCT CONSUMPTION GUIDE

Mortar Consumption

Coverage per mm thickness = Yield (L) / Applied Thickness (mm)

Mortars and Screeds

Product	Unit	Yield	Approximate Coverage (m ²)						
	(kg)	(L)	3	6	13	20	25	38	50
Sika MonoTop®-622 F	22.7	11.66	3.89	1.94	0.90	0.58	0.47	0.31	0.23
Sika MonoTop®-623 F	22.7	12.38	4.13	2.06	0.95	0.62	0.50	0.33	0.25
Sika® Level-125 ^{CA}	25	13	-	-	1.00	0.65	0.52	0.34	-
Sikacrete®-08 SCC	25	13	-	-	-	-	0.52	0.34	0.26
Sikacrete®-211 Flow PLUS	25	13	-	-	-	-	0.52	0.34	0.26
SikaQuick®-1000/2500	25	13	-	2.17	1.00	0.65	0.52	-	-
SikaRepair® SHB	17	9.5	3.17	1.58	0.73	0.48	0.38	0.25	-
SikaTop®-111 PLUS	28.5	13	-	-	1.00	0.65	0.52	-	-
SikaTop®-121 PLUS	25	11.5	3.83	-	-	-	-	-	-
SikaTop®-122 PLUS	28.5	13	4.33	2.17	1.00	0.65	0.52	0.34	-
SikaTop®-123 PLUS	20.5	10	3.33	1.67	0.77	0.50	0.40	0.26	-

Note: 1 L = 1 m² at 1 mm thick.

Water- and Solvent-Based Coatings Consumption

L/m^2 = Coverage per pail (m²) = Pail volume (L) * coverage rate (m²/L)

Wet Film Thickness (mils) = 40 / Coverage rate (m²/L)

Dry Film Thickness (mils) = Wet film Thickness * (Volume Solids/100)

Sealant Yield (Linear Metres Sealant per Unit)

JOINT DIMENSION (mm)		PACKAGING FORMAT				
Width	Depth	300 mL	600 mL	858 mL	5.7 L	11.4 L
6	6	7.4	14.8	21.2	141.3	282.7
13	6	3.7	7.4	10.6	70.7	141.4
13	13	1.9	3.7	5.3	35.3	70.7
19	6	2.5	5.0	7.1	47.3	94.6
19	13	1.3	2.5	3.6	23.8	47.5
19	19	0.8	1.7	2.4	16.0	31.9
25	6	1.9	3.7	5.3	35.3	70.7
25	13	0.9	1.9	2.7	17.7	35.3
25	19	0.6	1.3	1.8	12.0	23.9
25	25	0.5	1.0	1.4	9.1	18.2
32	6	1.5	3.0	4.3	28.5	57.0
32	13	0.8	1.5	2.2	14.3	28.5
32	19	0.5	1.0	1.5	9.7	19.4
32	25	0.4	0.7	1.0	6.8	13.7
32	32	0.3	0.6	0.9	5.7	11.4
38	6	1.3	2.5	3.6	23.8	47.5
38	13	0.6	1.3	1.8	12.0	23.9
38	19	0.4	0.8	1.2	8.0	16.0

1 metre = 3.28084 ft

Note: The above charts are a theoretical guide only. Allowances must be made for surface profile, wastage, etc.

Important

The Information, and in particular, the recommendations relating to the application and end-use of Sika products, are given in good faith based on Sika's current knowledge and experience of the products when properly stored, handled and applied under normal conditions, within their shelf life. In practice, the differences in materials, substrates and actual site conditions are such that no warranty in respect of merchantability or of fitness for a particular purpose, nor any liability arising out of any legal relationship whatsoever, can be inferred either from this information, or from any recommendations, or from any other advice offered. The information contained herein does not relieve the user of the products from testing them for the intended application and purpose. The proprietary rights of third parties must be observed. All orders are accepted subject to our current terms of sale and delivery. Users must always refer to the most recent issue of the local Product Data Sheet for the product concerned, copies of which will be supplied on request or may be downloaded from our website at: www.sika.ca

**BUILDING TRUST
CONSTRUIRE LA CONFIANCE**



**APPROVED PRODUCTS
PRODUITS APPROUVÉS**

Sika Canada Inc.

Head Office

601 Delmar Avenue, Pointe-Claire, QC H9R 4A9

www.sika.ca | 1-800-933-7452

