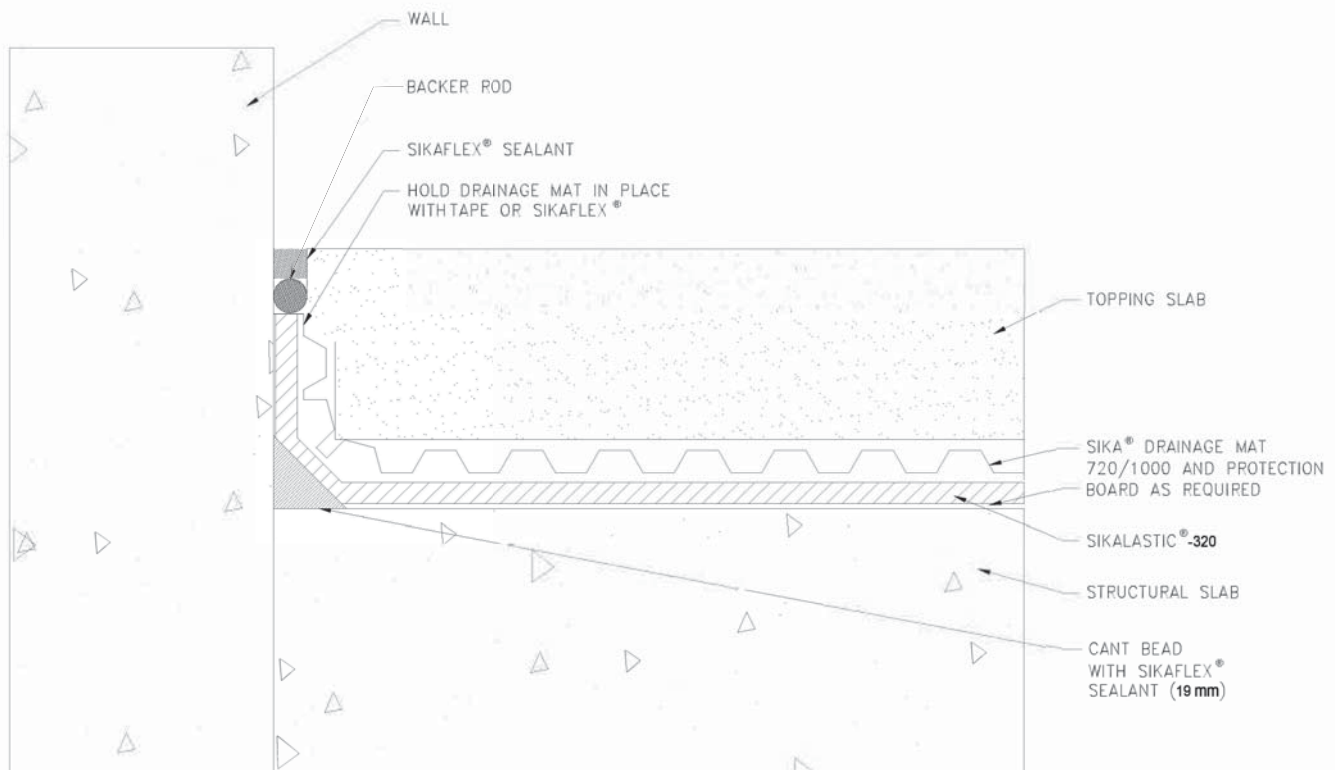
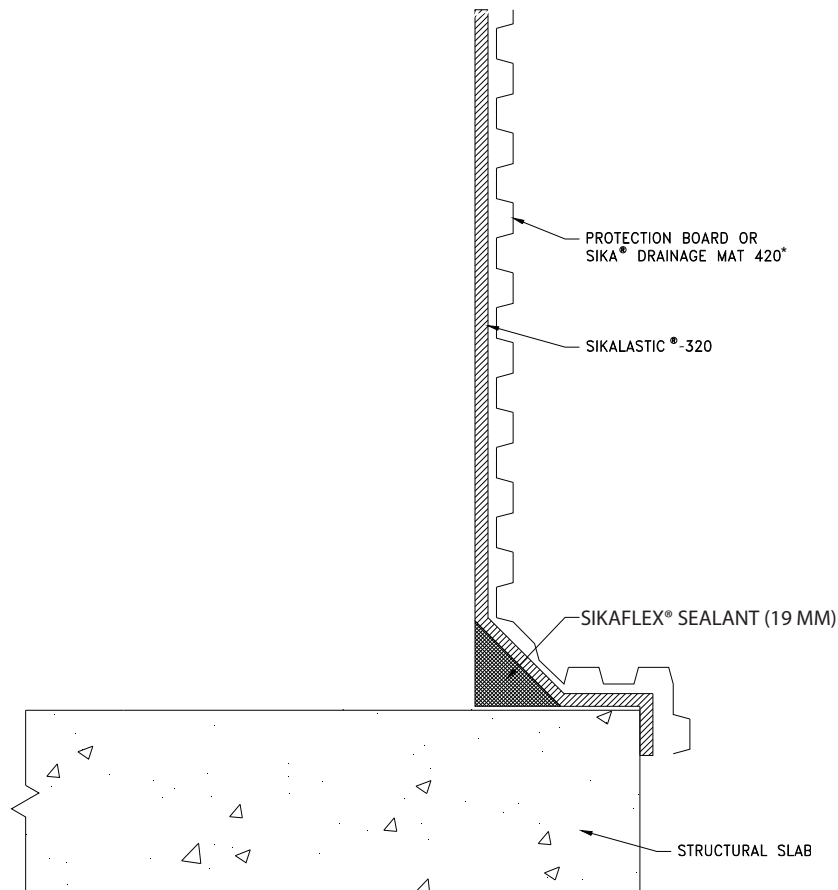


TYPICAL DETAIL - Sikalastic®-320 BETWEEN SLAB MEMBRANE VERTICAL TRANSITION

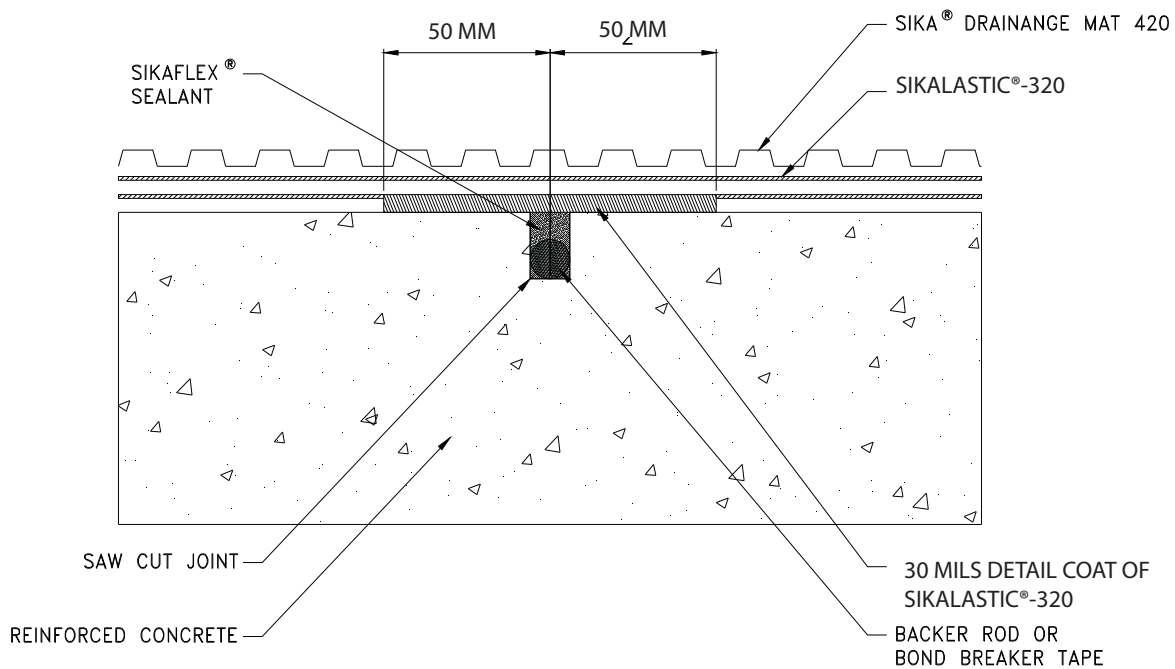


TYPICAL DETAIL - Sikalastic®-320 CONCRETE RETAINING WALL

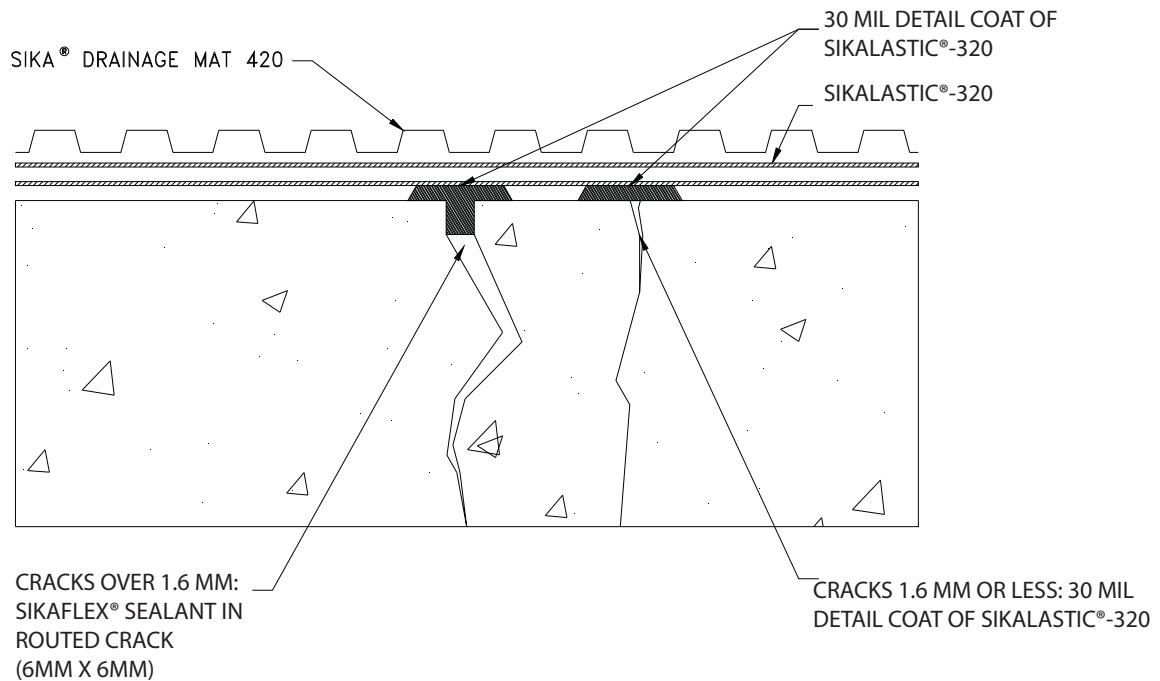


*DRAINAGE MAT MAY BE TEMPORARILY HELD IN PLACE BY SIKAFLEX OR TWO-SIDED TAPE.

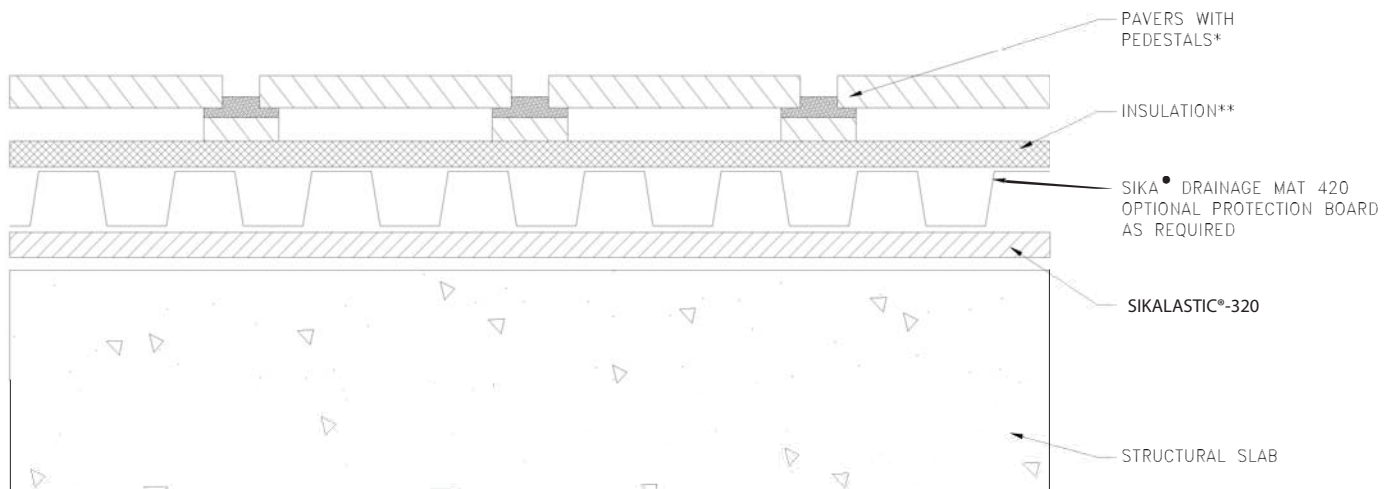
TYPICAL DETAIL - Sikalastic®-320 CRACK CONTROL



TYPICAL DETAIL - Sikalastic®-320 CRACK



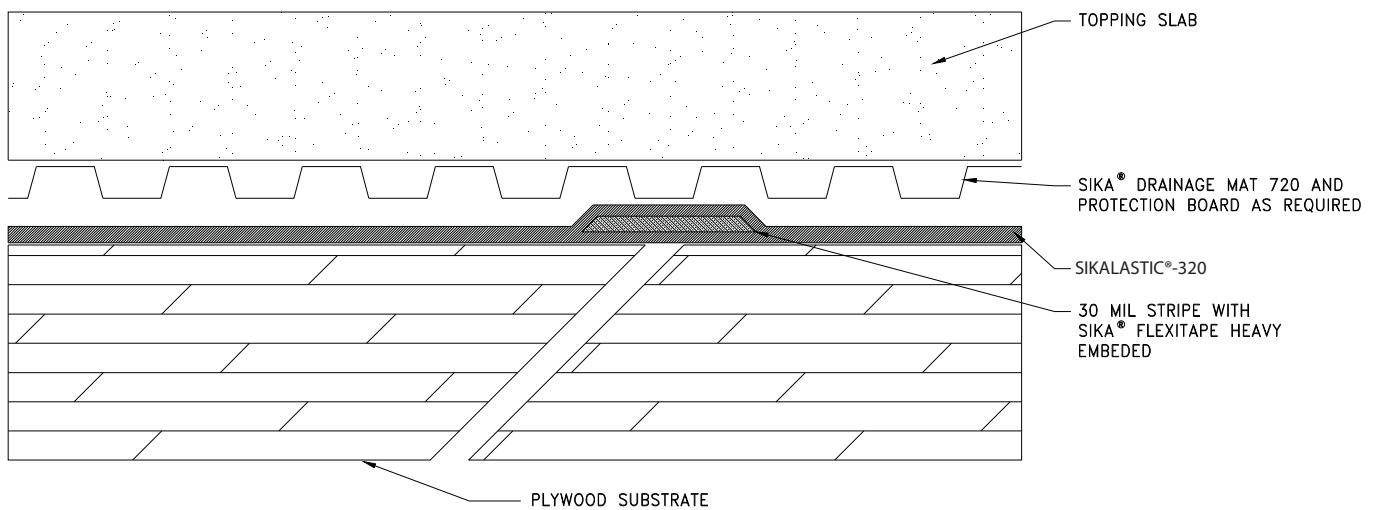
TYPICAL DETAIL - Sikalastic®-320 INSULATED PLAZA WITH PAVERS



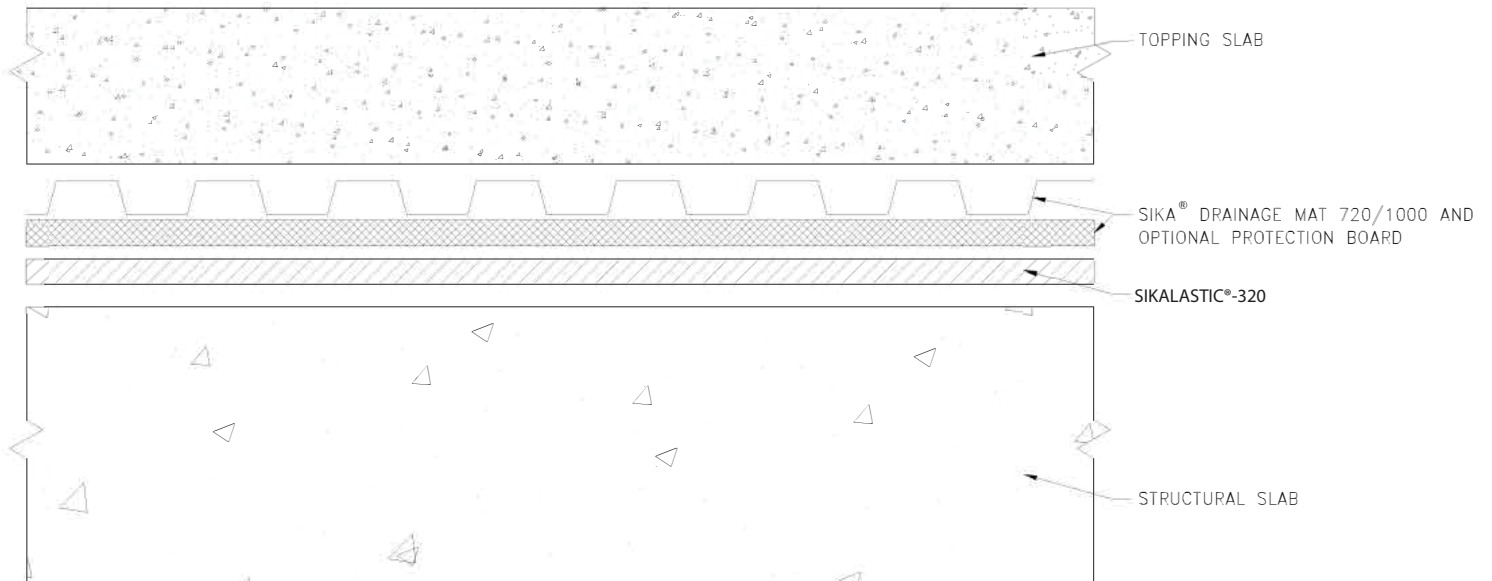
*CONTACT SIKA CANADA AT 1-800-933-7452 FOR PAVER OPTIONS AVAILABLE IN YOUR REGION

** INSULATION BOARD MAY BE REPLACED OR USED IN CONJUNCTION WITH A 25 MM THICK OR GREATER SAND BED

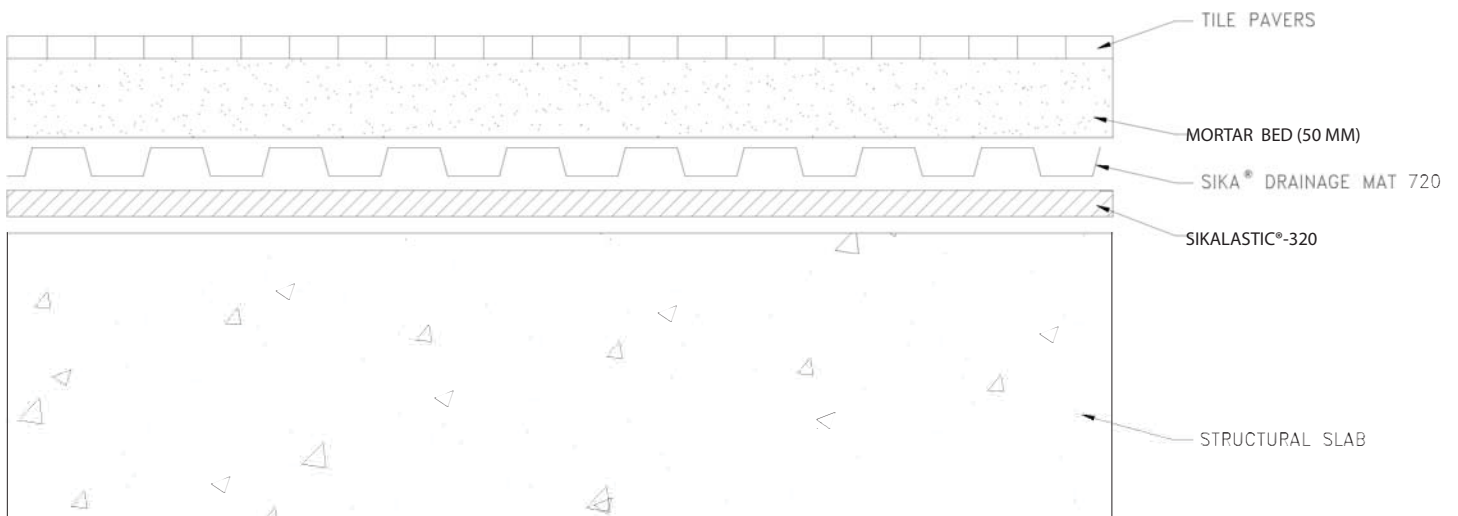
TYPICAL DETAIL - Sikalastic®-320 PLYWOOD SUBSTRATE



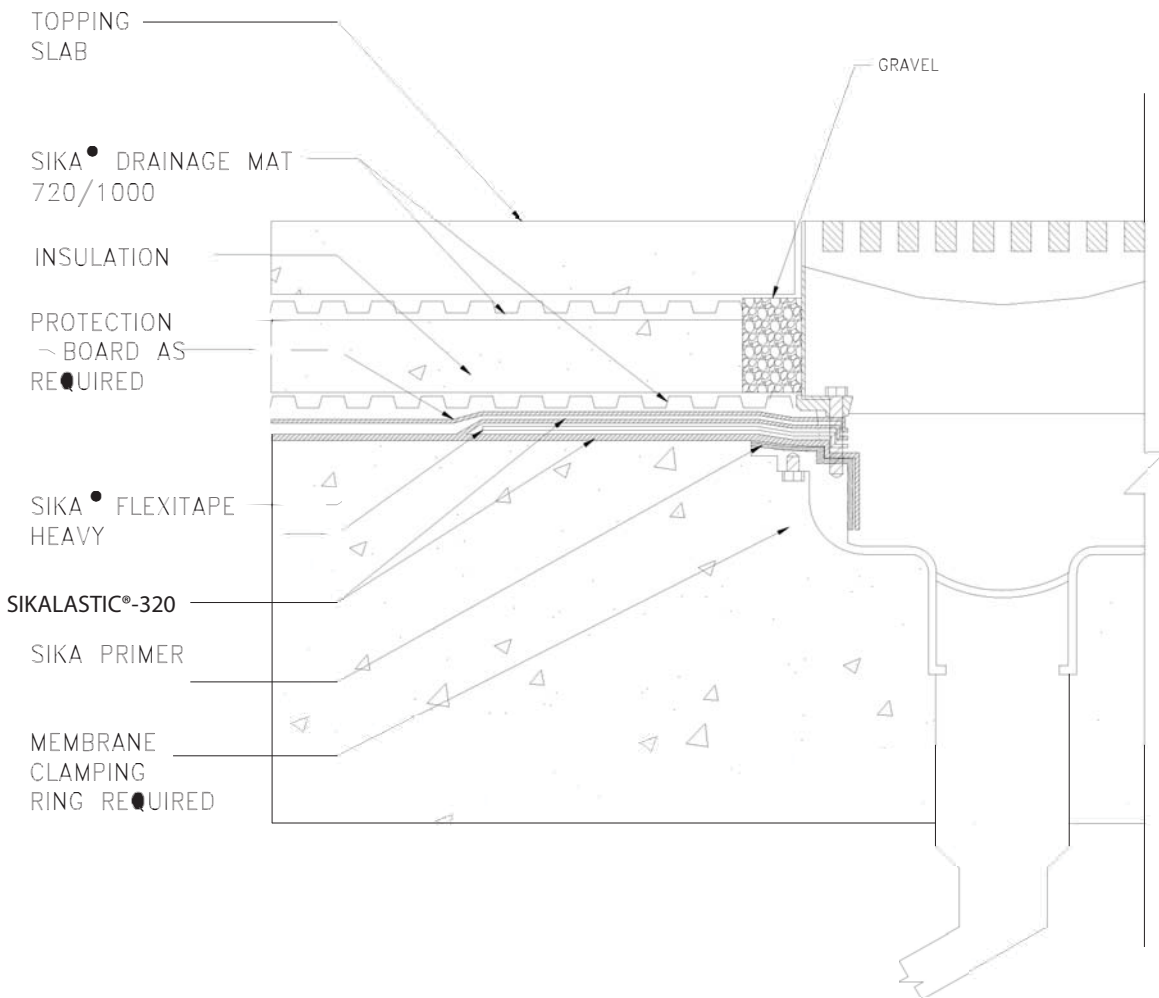
TYPICAL DETAIL - Sikalastic®-320 SPLIT SLAB



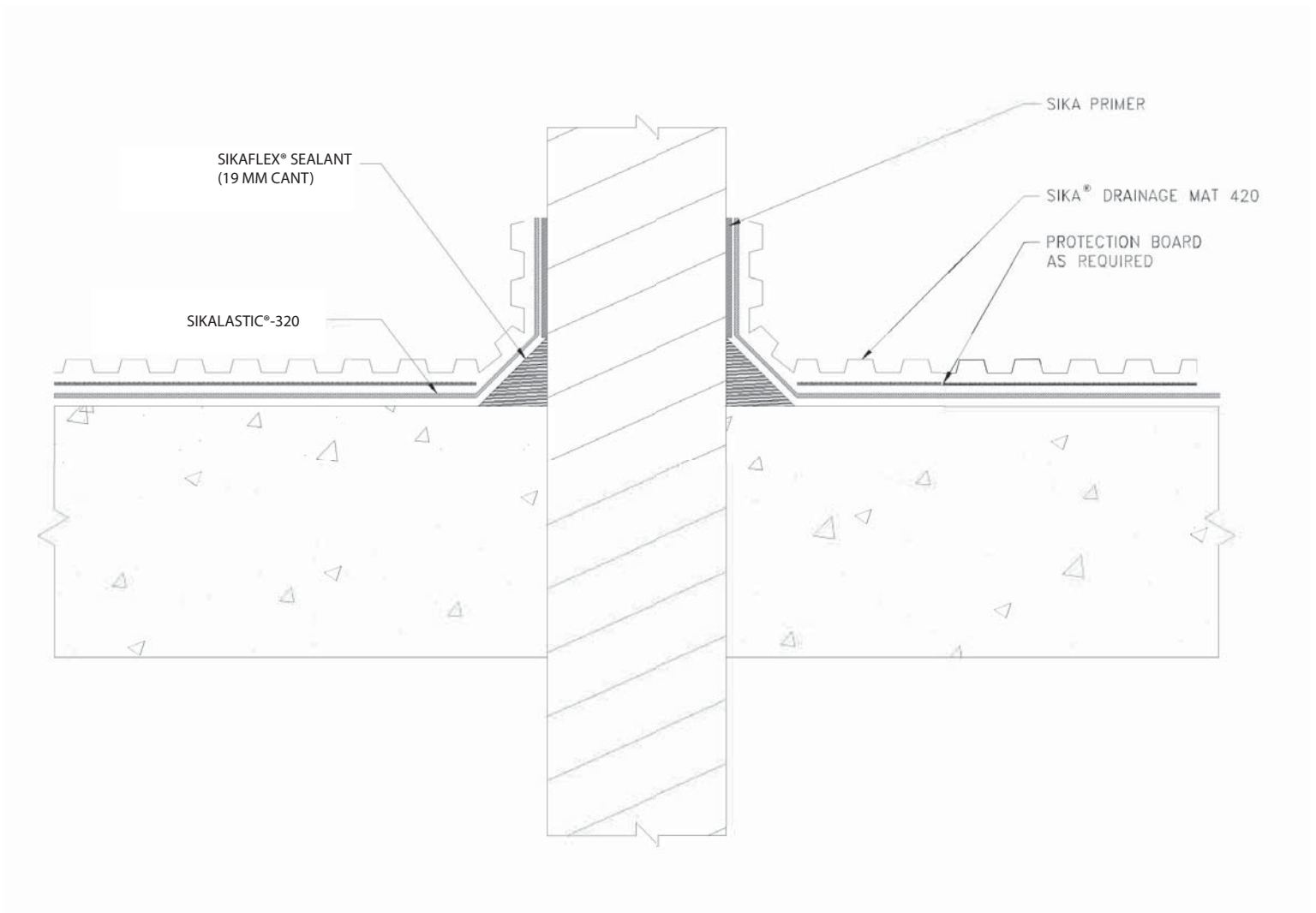
TYPICAL DETAIL - Sikalastic®-320 TILE WITH MORTAR BED



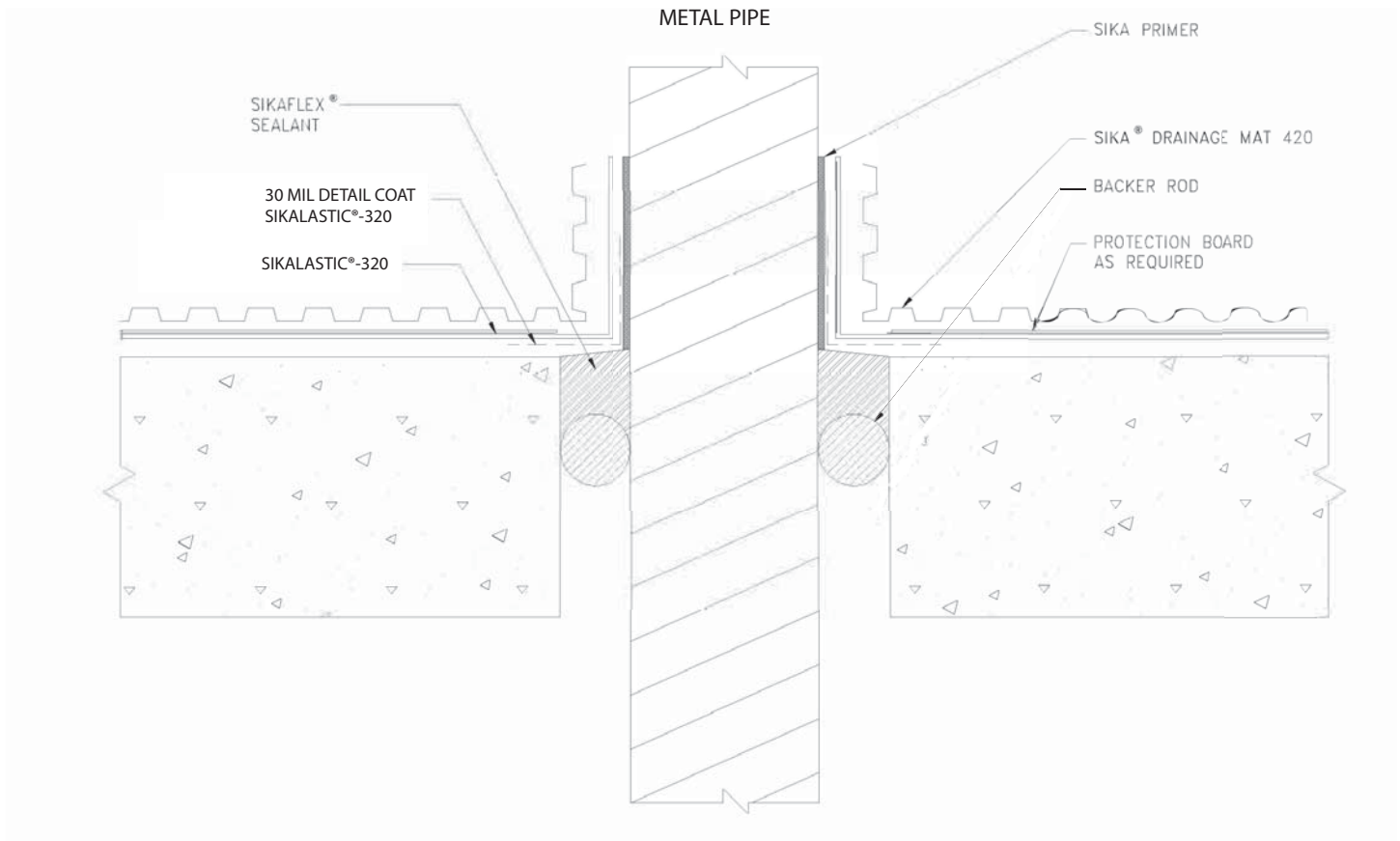
TYPICAL DETAIL - Sikalastic®-320 DRAIN DETAIL



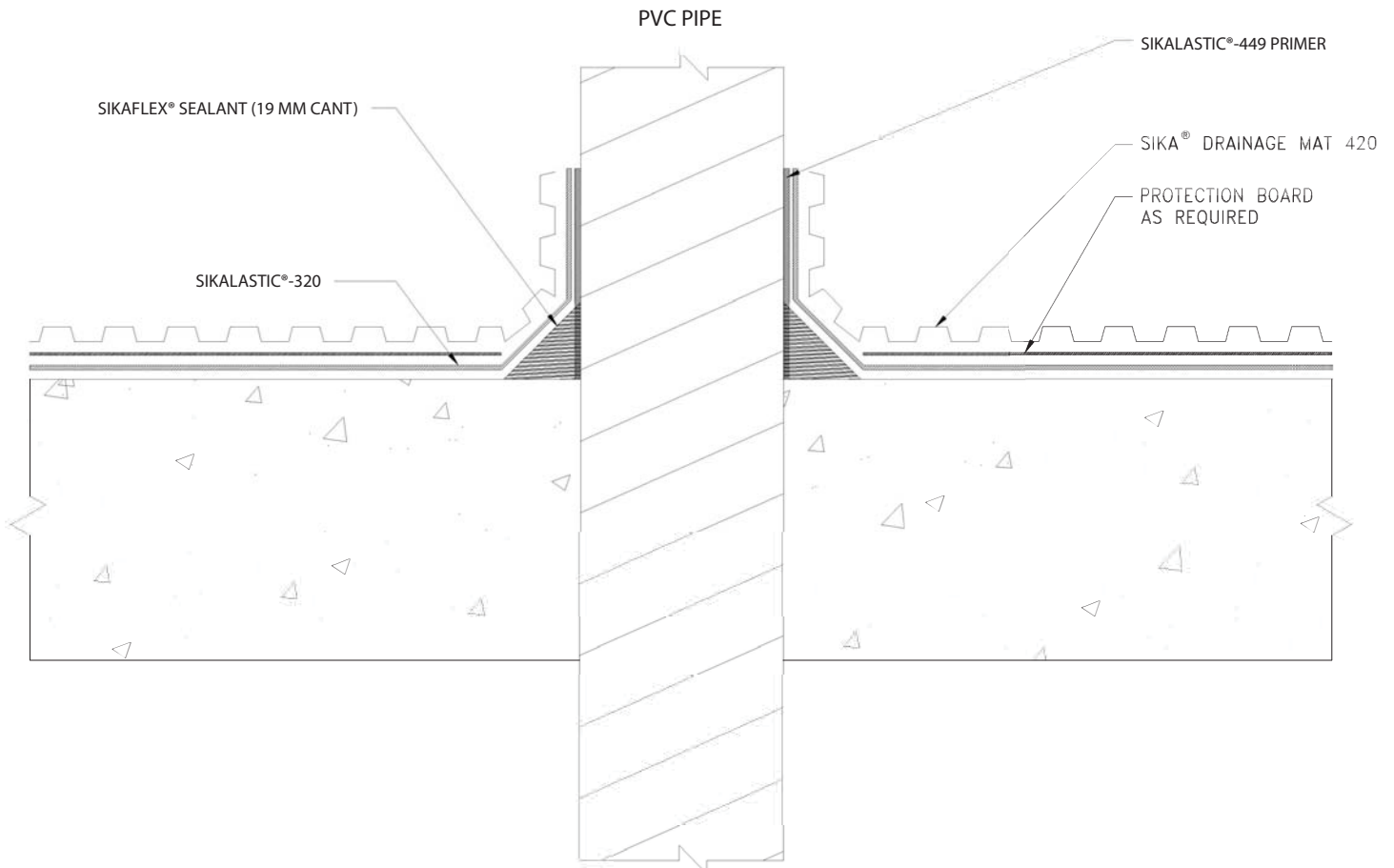
TYPICAL DETAIL - Sikalastic®-320 TREATMENT OF METAL PENETRATION (2)



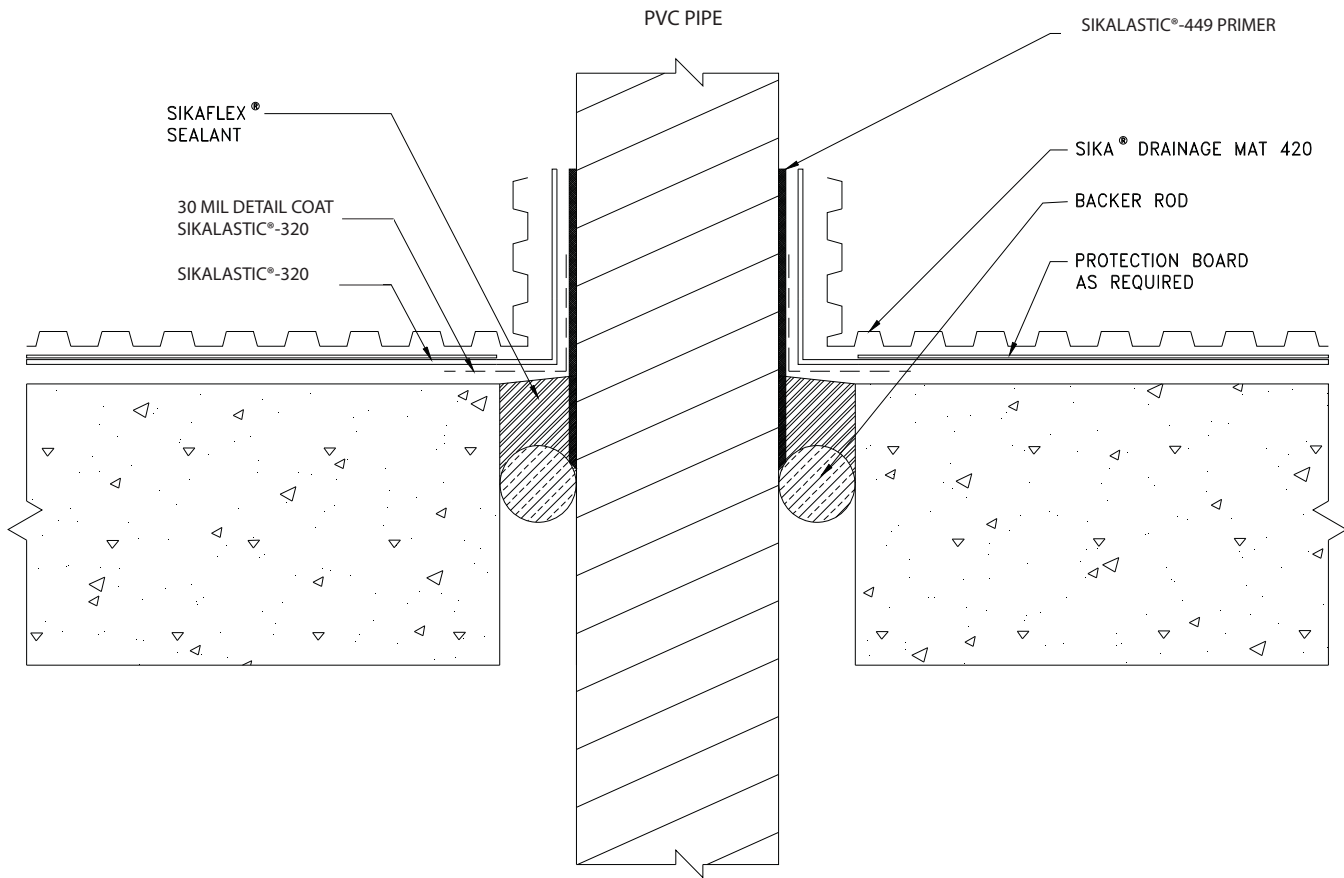
TYPICAL DETAIL - Sikalastic®-320 TREATMENT OF METAL PENETRATION (1)



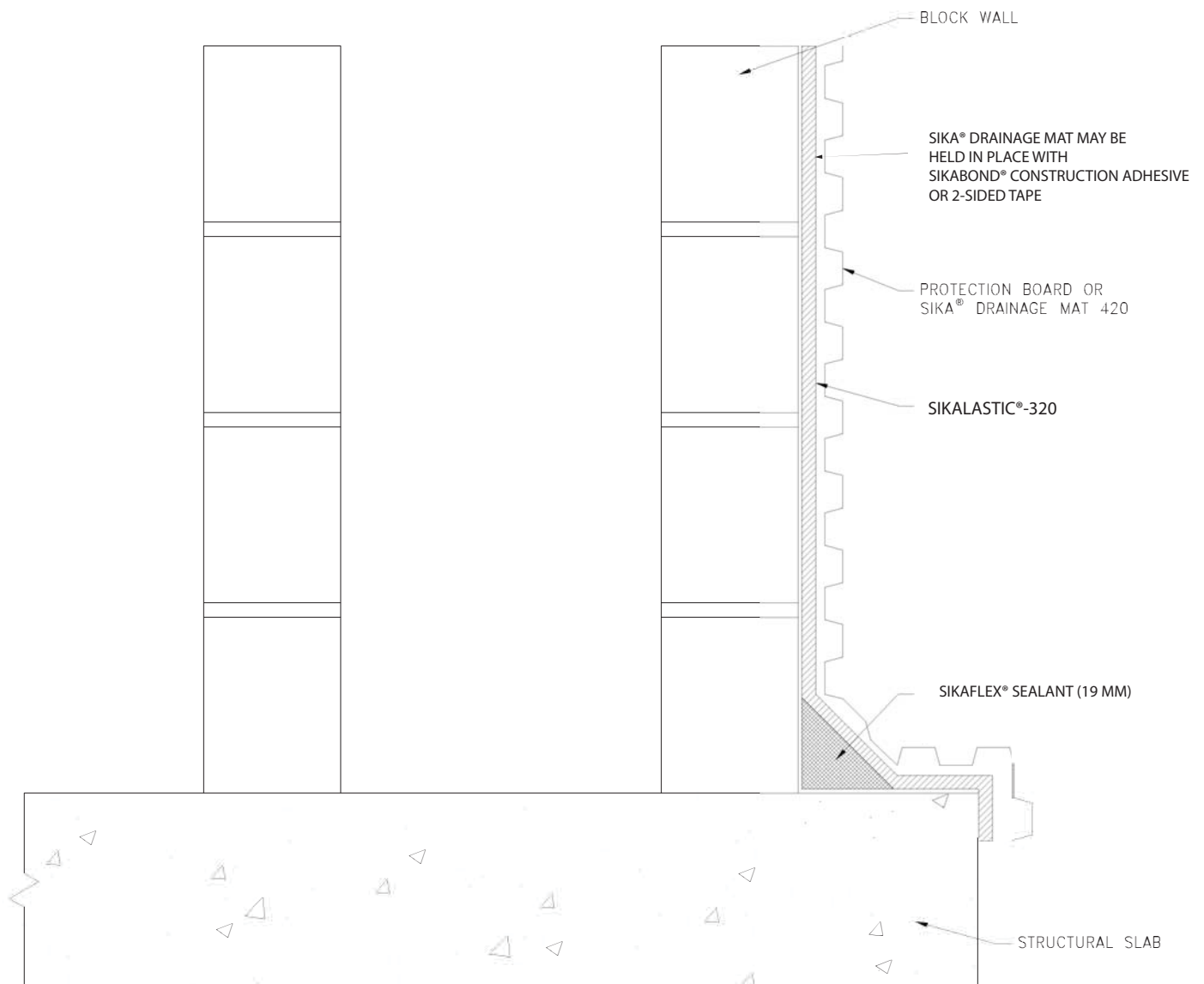
TYPICAL DETAIL - Sikalastic®-320 TREATMENT OF PVC PENETRATION



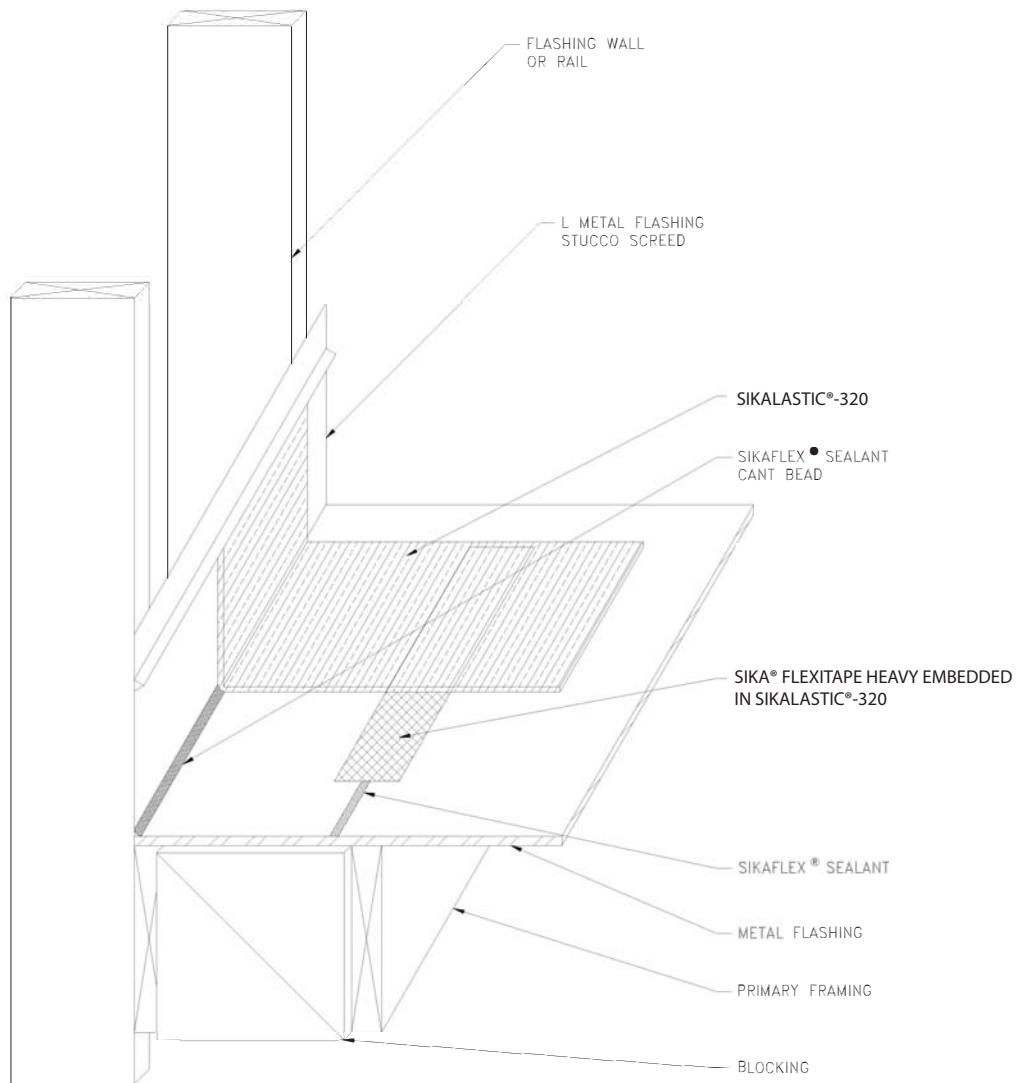
TYPICAL DETAIL - Sikalastic®-320 TREATMENT OF PVC PENETRATION (2)



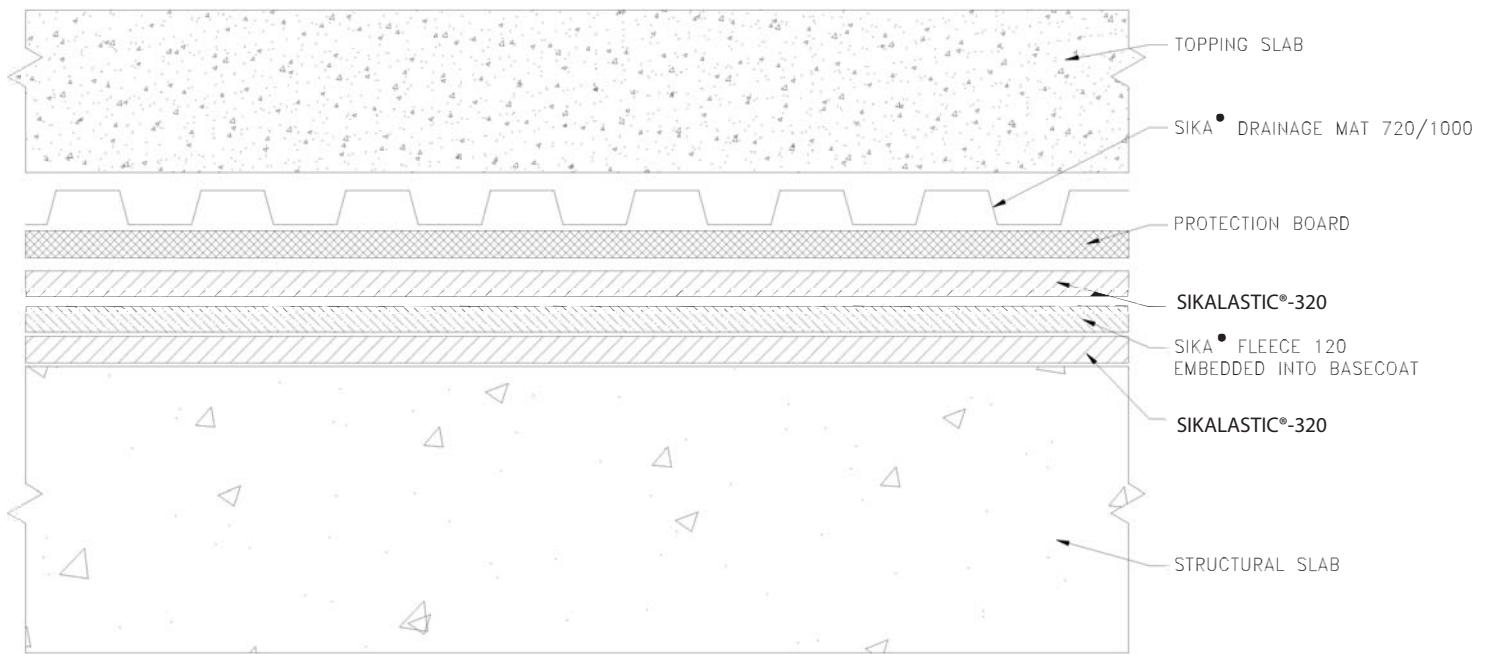
TYPICAL DETAIL - Sikalastic®-320 VERTICAL SUBSTRATE



TYPICAL DETAIL - Sikalastic®-320 WALL TO DECK FLASHING



TYPICAL DETAIL - Sikalastic®-320 HEAVY-DUTY SYSTEM (OPTION 1)



TYPICAL DETAIL - Sikalastic®-320 HEAVY-DUTY SYSTEM (OPTION 2)

