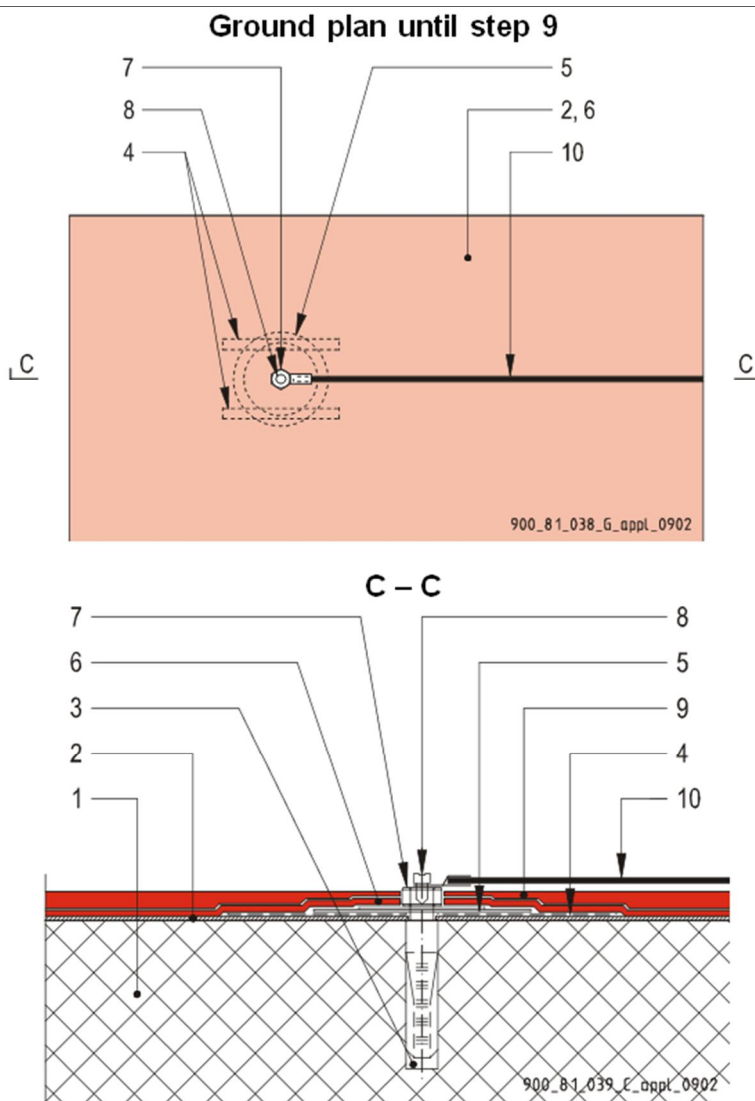


DETAIL

Sikafloor® - Conductive Coatings

Detailing of placing of an earthing point, Standard Solution (ECF / ESD floors)



1. Concrete construction
2. Sikafloor®-156/1610, priming of the whole area
3. Drilling a hole for the heavy-duty anchor and inset-screw
4. Placing of the two copper-strips and insert anchor; anchor must be flush with the floor surface
5. Placing of the metal-plate and metal-disc
6. Sikafloor®-220 W Conductive, conductive layer
7. Fix the large and medium size metal -plates with the large metal screw
8. Fix the eyelet fastener using the small metal washer and screw to the large metal screw
9. Application of Sikafloor® conductive coating onto the whole area
10. Isolated wire (The connection of the Earthing point to the mains has to be executed by a licensed electrical engineer)