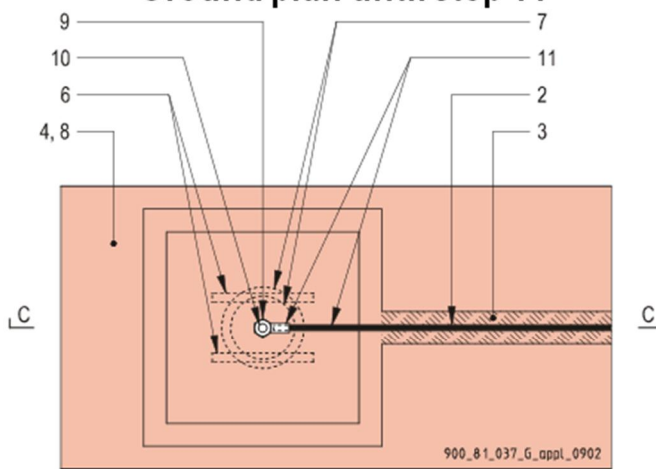


DETAIL

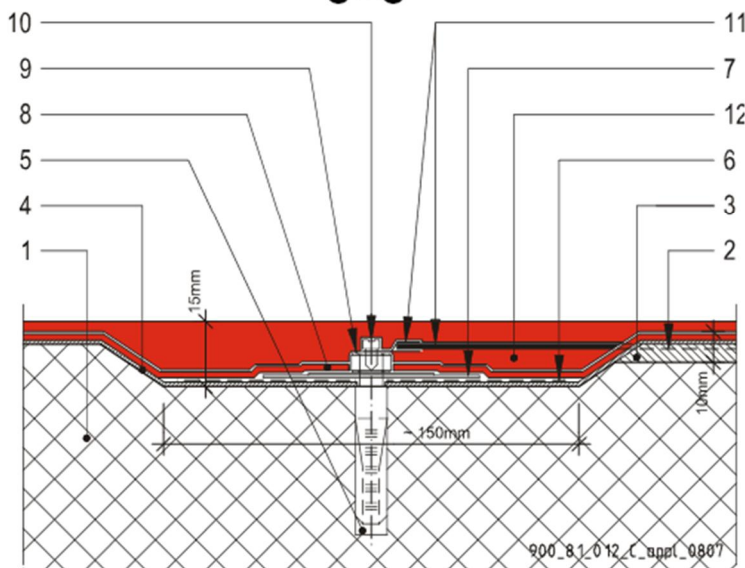
Sikafloor® - Conductive Coatings

Detailing of placing of an earthing point within the area with a cut-out (ECF / ESD floors)

Ground plan until step 11



C - C



1. Concrete construction
2. Groove for the isolated wire. After placing the wire in the groove and before priming, the groove must be filled with an epoxy mortar
3. Epoxy mortar
4. Sikafloor®-156/1610, priming of the whole area and the cut-out
5. Drilling a hole for the heavy-duty anchor and inset-screw
6. Placing of the two copper-strips and insert anchor; anchor must be flush with the floor surface
7. Placing of the metal-plate and metal-disc
8. Sikafloor®-220 W Conductive, conductive layer
9. Fix the large and medium size metal-plates with the large metal screw
10. Fix the eyelet fastener using the small metal washer and screw to the large metal screw
11. The connection of the isolated wire point to the mains has to be executed by a licensed electrical engineer.
12. Application of Sikafloor® conductive coating onto the whole area incl. cut-out